

DHL EXPRESS

# SERVICE & RATE GUIDE 2021

 POLAND



**The International Specialists**  
Page 2



**Services**  
Page 4



**How to Ship with DHL Express**  
Page 15



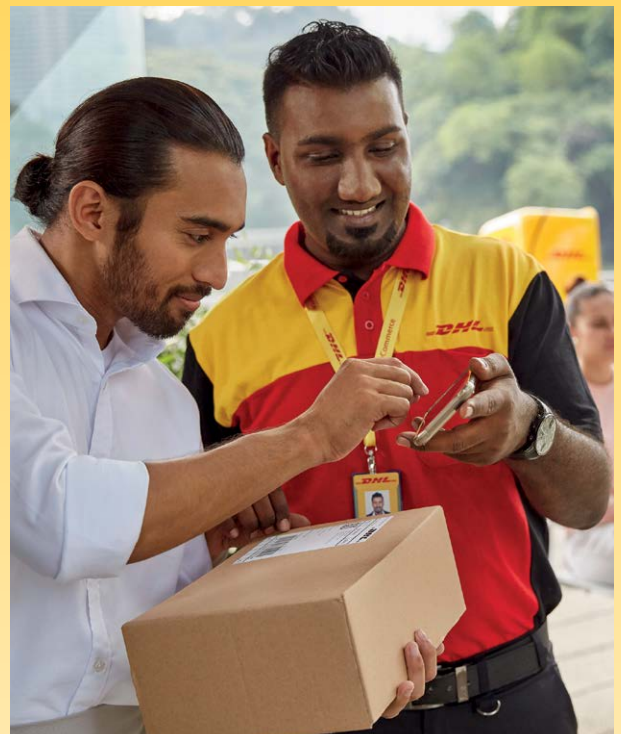
**Shipping Tools**  
Page 18



**Zones and Rates**  
Page 19



**Simple Rules**  
Page 45



Ready to ship?  
Get a quote from [MyDHL+](#)

# CONNECTING YOUR WORLD



Operating in  
**220+** countries and territories worldwide

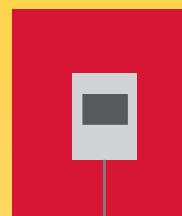
**260+** aircraft



**3,200+**  
facilities

**3,200+**  
flights per day  
(commercial and non-commercial)

**360+**  
TAPA\* certifications



By the year 2050, Deutsche Post DHL Group aims to achieve zero emissions logistics

MISSION 2050  
**ZERO EMISSIONS**  
**GOGREEN**

**400 million+**  
shipments per year

**36,000+**  
vehicles (own, leased, subcontracted trucks and vans)



**100,000+**  
employees

**84,000+**  
Service Points

# THE INTERNATIONAL SPECIALISTS



**The International Specialists**

**Services**

**How to Ship with DHL Express**

**Shipping Tools**

**Zones and Rates**

**Simple Rules**

DHL Express is the global market leader and specialist in international shipping and courier delivery services. We have been building and continuously improving our service for more than 50 years. Key to our success is the strength of our global network, spanning more than 220 countries and territories, in which some 100,000 employees provide services to more than 2.7 million customers. What really sets us apart is the international shipping expertise of our people. Their knowledge, coupled with their passion and 'Can-Do' attitude, delivers a truly world-class service and ensures that your shipments get to their destination securely and as quickly as possible.



Through our Certified International Specialist Program we provide all DHL Express employees with the specialized knowledge they need to do their job competently and confidently – and that's good news for both employees and customers. As Certified International Specialists you can rely on DHL Express as the experts in international express.

This guide enables you to find out how DHL Express can help you with your international shipping needs, and to see what best fits your needs from our wide range of products and services. Should you have any questions, please get in touch with your DHL Account Manager or visit us at [dhl.com.pl/exp-en/contact\\_center/contact\\_express.html](https://www.dhl.com.pl/exp-en/contact_center/contact_express.html).




**The International Specialists**
**Services**
**How to Ship with DHL Express**
**Shipping Tools**
**Zones and Rates**
**Simple Rules**
**Export Services**
**Import Services**
**E-commerce**
**Optional Services**
**Surcharges**
**Custom Services**
**Non-Standard Service**

Our core services are time definite and offer you secure door-to-door delivery of goods and documents to and from virtually every country and territory. Whether you need your shipments delivered at the start, middle or end of a business day, our services offer full track-and-trace visibility so you always know where your shipments are.

## EXPORT SERVICES

### DHL Express Worldwide

Our most popular product, DHL Express Worldwide, offers an end of business day delivery service around the world for pieces up to 70kg and shipments up to 1,000kg.

### DHL Express Envelope

International door-to-door delivery of lightweight document shipments – weight up to 300 grams – by the end of the next possible business day. Packaging envelope and GoGreen Climate Neutral service included in the price.



### DHL Medical Express

Excellent service for medical and health industry. Includes shipment and priority handling of category B biological materials (UN 3373). Medical Express shipments are monitored 24/7 via Global Quality Centers, ensuring all necessary steps are taken.

### DHL Economy Select

A reliable economy service for international road shipments, designed for single or multi-piece shipments and pallets in Europe. Affordable prices for a convenient door-to-door service, strictly keeping to deadlines. DHL Economy Select is the ideal choice for less urgent shipments.

### Our international services at a glance

	<b>DHL Express Worldwide</b>	<b>DHL Express Envelope</b>	<b>DHL Medical Express</b>	<b>DHL Economy Select</b>
<b>Service description</b>	Delivery by the end of the next possible business day	Delivery by the end of the next possible business day	Priority delivery in the shortest possible time	Priority delivery in the shortest possible time
<b>Money-back guarantee</b>	No	Yes*	Yes*	No
<b>Countries and territories covered</b>	More than 220	More than 220	160	30
<b>Delivery attempts</b>	2	2	2	2
<b>Maximum piece weight (not on pallet)</b>	70kg	0.3kg	30kg	70kg
<b>Maximum pieces per shipment</b>	99	-	99	99
<b>Maximum piece dimensions (L x W x H)†</b>	120 x 80 x 80cm	32 x 24cm	120 x 80 x 80cm	120 x 80 x 80cm
<b>Maximum pallet weight</b>	300kg	Pallets not accepted	Pallets not accepted	1,000kg
<b>Maximum shipment weight</b>	<1,000kg	0.3kg	300kg	<1,000kg
<b>Maximum pallet dimensions (L x W x H)</b>	120 x 120 x 160cm	Pallets not accepted	Pallets not accepted	120 x 120 x 160cm

\*Additional terms and conditions apply – see [dhl.com.pl/exp-en/express/shipping/shipping\\_advice/terms\\_conditions.html](https://www.dhl.com/pl/exp-en/express/shipping/shipping_advice/terms_conditions.html) for details.

†A shipment is deemed unacceptable if its packaging is absent or inadequate, or if transporting the shipment would present risks of damaging equipment, other packages or injuring personnel. DHL reserves the right to either not accept or return the shipment to the shipper. These network restrictions are subject to change with 30 days' notice.



The International  
Specialists

Services

How to Ship  
with DHL Express

Shipping  
Tools

Zones and  
Rates

Simple  
Rules

Export  
Services

Import  
Services

E-commerce

Optional  
Services

Surcharges

Custom  
Services

Non-Standard  
Service

## IMPORT SERVICES

With our DHL Express Worldwide Import product, you can import shipments from over 220 countries and territories in the world. This is more than any other express delivery company can offer. What's more, customers in, say, the USA can order an import from China not just to the USA, but to other destinations as well. We call this a third country shipment.

There is no need for local brokers or forwarders to get involved in any part of the process. You are in full control, and able to manage all aspects of your imports in a very simple way.

If you need a faster delivery, our DHL Express 9:00 and DHL Express 12:00 services are available for imports as well, as is our DHL Economy Select Import service for less urgent shipments throughout Europe. You can order an import from another country, to be delivered to your country or any other destination, by using our dedicated electronic shipping solution for imports. You will have one account number, one invoice in a single currency and a fixed price that means you know exactly what you will pay.

### DHL Import Medical Express

Excellent service for medical and health industry. Includes shipment and priority handling of category B biological materials (UN 3373). Medical Express shipments are monitored 24/7 via Global Quality Centers, ensuring all necessary steps are taken.

### DHL Import Express Worldwide

Regular import of spare parts, samples, finished goods or other items, requires comprehensive solutions for you. With DHL Import Express Worldwide we can pick up your shipments from 220 countries and deliver them on the next day or the next possible business day. We also offer delivery by 9:00 and delivery by 12:00 services with guarantee full transport costs refund.†

### DHL Express Worldwide Import 3rd Country DHL Economy Select Import 3rd Country

Should a customer need to send a shipment between two countries, or inside one country†† (applies only to DHL Import Express Worldwide 3rd Country), without repacking in Poland, it is possible to use the third country option. It enables payment for the service in Poland with a DHL Import Express account.

### DHL Import Economy Select

A reliable economy service for international road shipments, designed for importing single or multi-piece shipments and pallets in Europe. Affordable prices for a convenient door-to-door service, strictly keeping to deadlines.

†According to DHL conditions of cost refund.

††Shipments sent inside one country will be charged based to DHL WORLDWIDE EXPRESS IMPORT 3RD COUNTRY standard pricelist without any discount. For the aforementioned DHL Express services, general terms and conditions available at [dhl.com.pl/exp-en/express/shipping/shipping\\_advice/terms\\_conditions.html](https://www.dhl.com.pl/exp-en/express/shipping/shipping_advice/terms_conditions.html) are applied.



The International Specialists

Services

How to Ship with DHL Express

Shipping Tools

Zones and Rates

Simple Rules

Export Services

Import Services

E-commerce

Optional Services

Surcharges

Custom Services

Non-Standard Service

## POWERING UP THE POTENTIAL OF INTERNATIONAL E-COMMERCE

### International e-commerce

The explosion in online shopping extends across borders, and this trend looks set to continue. DHL supports our customers' international growth with:

- Global reach
- Express delivery options
- Flexible delivery options for receivers
- Duty billing options and customs expertise
- Consultative advice for our customers on how to increase sales and grow cross-border

### Fast, flexible and easy

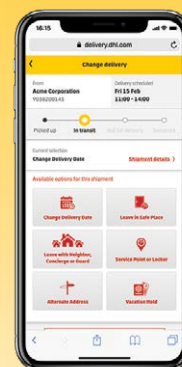
Consumers expect everything 'on demand' – anytime, anywhere. DHL shipping options give customers a distinct competitive edge: over 90% of online consumers look at the available delivery options before going to the checkout, and their decision is influenced by delivery speed, flexibility and ease.



## ON DEMAND DELIVERY

DHL's On Demand Delivery tool ([ondemand.dhl.com](http://ondemand.dhl.com)) keeps receivers informed of shipment progress, allowing them to reschedule, reroute, release or conveniently collect from a DHL Service Point. It is an innovative, easy-to-use, mobile-friendly service, especially for residential deliveries.

Designed to enhance the online shopper's experience, especially for residential deliveries, the service is available globally, meaning consistent service standards and a harmonized user experience.



Scheduled delivery



Signature release/  
leave your signature



Leave with neighbor  
or concierge



Collect from  
Service Point



Alternative address



Vacation hold

### Discover and grow

Visit [discover.dhl.com](http://discover.dhl.com) to learn more about how DHL helps e-commerce companies ranging from start-ups to large enterprises, advising them on how to grow internationally. Our e-commerce focused country guides, white papers such as 'The 21st Century Spice Trade' ([dhlexpress.pl/wp-content/uploads/2020/11/dhl\\_express\\_cross\\_border\\_e-commerce\\_21st\\_century\\_spice\\_trade-1.pdf](http://dhlexpress.pl/wp-content/uploads/2020/11/dhl_express_cross_border_e-commerce_21st_century_spice_trade-1.pdf)), customer and trend research and market intelligence tools can enable you to better understand your customers and shipping requirements to take the next step in your e-commerce journey.

Our customers go global with ease and speed, maximizing the enormous potential of international e-commerce.



The International Specialists

Services

How to Ship with DHL Express

Shipping Tools

Zones and Rates

Simple Rules

Export Services

Import Services

E-commerce

Optional Services

Surcharges

Custom Services

Non-Standard Service

## OPTIONAL SERVICES

DHL Express offers a wide range of optional services – from non-standard deliveries and billing options to climate neutral shipping. You have the flexibility to choose the best service for your needs with our express delivery services worldwide.

### Delivery service by 9:00 (10:30 to the USA) [View charges](#)

Delivery service by 9:00 (10:30 to the USA) on the next day or on the next possible business day is offered to the majority of business centers in Europe, Africa, Asia and the Americas. DHL Express 9:00 features a money-back guarantee in accordance with DHL Express conditions of cost refund<sup>†</sup> and is suitable for pieces up to 30kg and shipments up to 300kg.

### Delivery service by 12:00 [View charges](#)

Delivery service by 12:00 on the next day or on the next possible business day. DHL Express 12:00 offers a money-back guarantee in accordance with DHL Express conditions of cost refund<sup>†</sup> and allows for heavier pieces up to 70kg and shipments up to 300kg.

### Shipment Insurance [View charges](#)

For customers shipping goods with a declared value. The minimum fee entitles customers to shipment cost compensation from the insurer in case of loss or damage. The insurance needs to be marked on the shipment proof along with the real value of the transported goods.

### Extended Liability [View charges](#)

Upon a customer's request, this service extends standard DHL Express liability, as described in services general terms and conditions<sup>†</sup>, when sending valuable documents such as passports or visa applications. In case of loss or damage of such documents, it provides coverage and compensation in the fixed amount of 1 700 PLN.

### GoGreen Climate Neutral [View charges](#)

This service is for customers who need a reliable method to calculate their annual carbon emissions at a shipment level and subsequently offset these emissions through approved environmental programs. The whole process is verified annually by an independent body accredited by the Société Générale de Surveillance (SGS). DHL can also provide reports for either a high level estimate or a detailed carbon footprint.



### Verbal Delivery Notification [View charges](#)

At a shipper's request, a proactive notification message given verbally by phone informing the shipper that their shipment has been delivered at destination. Payable service available at DHL Express Customer Service. Free information available via DHL e-solutions.

### Proactive Tracking [View charges](#)

At shipper's request, a proactive notification message given verbally by phone updating the customer on selected key transport events or incidents with a potential impact on transit time. Payable service available at DHL Express Customer Service. Free information available via DHL e-solutions.

### Proof of Delivery (POD) [View charges](#)

At sender's request, proof of delivery (a document with scanned receiver's signature) is handed to the Sender. Payable service available at DHL Express Customer Service – International Shipments. Service available for up to 90 days from the date of delivery.

### Electronic Proof of Delivery (ePOD) [View charges](#)

Service enabling confirmation of delivery in the form of an electronic document with the scan of recipient's signature. Available for free in the DHL ProView tool and at [dhl.com.pl/exp-en/express/tracking/proof\\_of\\_delivery.html#get\\_epod](https://dhl.com.pl/exp-en/express/tracking/proof_of_delivery.html#get_epod). Service available for up to 90 days from the date of delivery.

### Residential Address [View charges](#)

Customers shipping to a home or private residence can activate specific delivery options by designating the delivery address as residential. For such shipments, DHL Express will proactively notify the receiver via email or SMS about the shipment's progress. Receivers can then select the most suitable delivery option on the On Demand Delivery website: [ondemand.dhl.com](https://ondemand.dhl.com).

### Duties and Taxes Paid (DTP) [View charges](#)

To make exporting your shipment even easier, DHL Express can arrange for the shipper or a third party to be billed for any duties and taxes payable at destination, rather than the receiver of the shipment being billed. Charges apply whenever the shipper requests that duties, taxes or other regulatory fees be paid outside of the destination country.

<sup>†</sup>According to DHL conditions of cost refund. For the aforementioned DHL Express services, general terms and conditions available at [dhl.com.pl/exp-en/express/shipping/shipping\\_advice/terms\\_conditions.html](https://dhl.com.pl/exp-en/express/shipping/shipping_advice/terms_conditions.html) are applied.



The International  
Specialists

Services

How to Ship  
with DHL Express

Shipping  
Tools

Zones and  
Rates

Simple  
Rules

Export  
Services

Import  
Services

E-commerce

Optional  
Services

Surcharges

Custom  
Services

Non-Standard  
Service

## OPTIONAL SERVICES CONTINUED

### Importer of Record (IOR)

[View charges](#)

Allows the shipper to send a dutiable shipment to the receiver, with the duties and taxes invoiced to a third party at destination acting as the nominated Importer of Record. The customs invoice must indicate the importer's billing details in addition to the receiver's shipping address (bill to/ship to). A European Union company can be billed, but it must have an EORI number and Polish VAT number, or a Polish company with an EORI number can be billed. Customs declaration is always made on the payer's behalf, whose details are on the import invoice.

### Saturday Pickup

[View charges](#)

For selected postal codes in major business centers it is possible to pick up a shipment on Saturday (on customer's request). Shipments picked up on Saturday are delivered on the next working day. Available with DHL Express Worldwide and DHL Express Envelope services.

### Saturday Delivery

[View charges](#)

Saturday delivery service of small urgent shipments for selected postal codes in major business centers. Available with DHL Express Worldwide and DHL Express Envelope services.

### Neutral Delivery

[View charges](#)

Service dedicated for importers importing goods that are to be delivered to recipients with no information on their value. Customs clearance is performed on behalf of the importer who is the only one to receive all shipment and clearance related documents and invoices. This service has the benefit of avoiding the costs and time involved with additional reloading or storage.

### Change of Payer

[View charges](#)

The service enables changing of the payer upon the customer's request. After issuing the invoice the change of payer can be made upon the written request of a customer with a DHL account. Additional charges will be billed to the new payer indicated in the "Payer's change form". The service is available up to 80 calendar days from shipping day.

### eInvoice

[View charges](#)

Electronic equivalent of the printed invoice. eInvoice is a multifunctional, reliable and easy-to-use service. It enables

email notifications regarding the invoice, as well as viewing and printing waybills for invoiced shipments. eInvoice can be activated and accessed at [ebilling.dhl.com/customer/pl/](http://ebilling.dhl.com/customer/pl/).



### Packaging

[View charges](#)

We recommend free-of-charge standard DHL Express packaging, such as cardboard and foil envelopes. At the customer's request, we offer payable larger boxes and tubes and a wide range of specialized packaging enabling transport at controlled temperatures, above or below zero. DHL Express experts will advise on appropriate packaging. More information on packaging is available at [dhl.com.pl/exp-en/express/shipping/shipping\\_advice/packaging\\_advice.html](http://dhl.com.pl/exp-en/express/shipping/shipping_advice/packaging_advice.html).

### Dedicated Delivery

[View charges](#)

At shippers request, an immediate or non-routine, once-only delivery of a shipment within a normal working day that involves a specific vehicle such as tail lift truck or more than one courier. This definition can include a direct delivery from the Gateway through a dedicated courier. A receiver can request this service only via DHL Customer Service when booking an import shipment.



# SERVICES



The International  
Specialists

Services

How to Ship  
with DHL Express

Shipping  
Tools

Zones and  
Rates

Simple  
Rules

Export  
Services

Import  
Services

E-commerce

Optional  
Services

Surcharges

Custom  
Services

Non-Standard  
Service

## OPTIONAL SERVICES CONTINUED

### Hold for Collection

[View charges](#)

At shipper request a shipment is held at the default DHL delivery facility at destination for consignee collection, rather than attempt a delivery at the receiver's address. This service is booked through Customs Service or supporting shipping tools. The destination will notify the receiver when and at which facility the shipment is ready to collect. A consignee phone number is mandatory. HFC does not support collections at locations other than the default delivery facility.

consignee or a representative at the delivery address. DHL will ensure your shipment is not re-directed, or delivered at an alternative address.

### Paperless Trade

[View charges](#)

Allows the shipper to provide supporting paperwork such as customs invoices electronically when using PLT-enabled shipping tools. Country specific restrictions or value limits may apply.

### Dedicated Pickup

[View charges](#)

At the shipper's request, an immediate or non-routine, once-only pickup of a shipment within a normal working day that involves a specific vehicle such as tail lift truck or more than one courier. A receiver can request this service when booking an IMP shipment. Service is available only via DHL Express Customer Service Department.

### Leave with Neighbor

[View charges](#)

Upon receivers request, DHL Express is authorized to deliver when necessary to an address that is adjacent to the receiver's or with a security guard /gatekeeper against a third party signature as proof of delivery. The service is selected through On Demand Delivery (ODD) either before or after a failed delivery attempt. The delivery courier is given instruction <leave with neighbor>.

### Direct Signature

[View charges](#)

If you are sending sensitive documents or high value contents you can request DHL to obtain a direct signature from the





The International  
Specialists

Services

How to Ship  
with DHL Express

Shipping  
Tools

Zones and  
Rates

Simple  
Rules

Export  
Services

Import  
Services

E-commerce

Optional  
Services

Surcharges

Custom  
Services

Non-Standard  
Service

## SURCHARGES

In order to maintain a consistently high level of service, in specific circumstances DHL Express levies a surcharge for exceptional activities, ensuring that these surcharges are fair for all of our customers.

### Fuel Surcharge

[View charges](#)

Fuel surcharge is added to the basic price of shipment and extra services or additional payments related to transportation. The amount of the surcharge is determined based on average market price of aviation fuel. The current amount of fuel surcharge is available at [dhl.com.pl/exp-en/express/shipping/shipping\\_advice/express\\_fuel\\_surcharge.html](https://dhl.com.pl/exp-en/express/shipping/shipping_advice/express_fuel_surcharge.html).

### Category B Biological Materials (UN3373)

[View charges](#)

Air transport and handling of shipments containing category B biological material (UN3373), prepared for transport in accordance with IATA DGR regulations (packaging and labelling).

### Dry Ice (UN1845)

[View charges](#)

Handling and transportation of shipments containing dry ice (UN1845) used for maintaining low temperature. Additional charge for dangerous goods in excepted quantities. Cost of special packaging and dry ice not included.

### Lithium-ion Batteries (section II, PI966)

[View charges](#)

Service and air transport of deliveries containing lithium-ion batteries packed with equipment in accordance with section II of IATA Packaging Instruction PI 966. Deliveries must be packed and labeled in accordance with valid instructions.

### Lithium-ion Batteries (section II, PI967)

[View charges](#)

Service and air transport of deliveries containing lithium-ion batteries contained in equipment in accordance with section II of IATA Packaging Instruction PI 967. Deliveries must be packed and labeled in accordance with valid instructions.

### Lithium-metal Batteries (section II, PI 969)

[View charges](#)

Applicable only for service and air transport of deliveries containing lithium-metal batteries packed with a device, prepared in accordance with the section II of IATA Packaging Instruction (PI 969). All deliveries containing lithium-metal

batteries must be packed and labelled in accordance with valid IATA instructions. Lithium-metal batteries in bulk (PI 968) are not allowed in DHL Express air transport service.

### Lithium-metal Batteries (section II, PI 970)

[View charges](#)

Applicable only for service and air transport of deliveries containing lithium-metal batteries packed with a device, prepared in accordance with the section II of IATA Packaging Instruction (PI 970). All deliveries containing lithium-metal batteries must be packed and labelled in accordance with valid IATA instructions.

### ID 8000 Consumer Goods

[View charges](#)

Consumer goods are all items classified as dangerous goods falling into the following categories: class 2 – gases (non-toxic aerosols only), class 3 – flammable liquids (perfume, paints, nail polishes, nail polish removers, etc.), subclass 6.1 – low-toxic substances (e-cigarette liquids etc.), as well as substances that are potentially environmentally threatening. All consumer goods require product characteristic cards to be presented by the sender and preparation for transportation in accordance with IATA DGR Y963 guidelines. At least two completed copies of the Shipper's Declaration for Dangerous Goods are required.

### Dangerous Goods

[View charges](#)

Handling and transportation of shipments containing goods qualified as dangerous, in accordance with IATA Dangerous Goods Regulations. This service applies to lithium batteries in Section IB and section II PI 965-CAO.

### Dangerous Goods in Excepted Quantities (EQ)

[View charges](#)

Air and road transport of shipments containing substances and dangerous goods in excepted quantities (EQ – Excepted Quantities).

### Dangerous Goods in Limited Quantities (LQ)

[View charges](#)

Handling and transportation of shipments containing limited quantities (LQ – Limited Quantities) of dangerous substances and goods (in accordance with ADR 3.4 regulations). This definition does not apply to: dry ice (UN1845), category B biological material (UN3373), dangerous goods in excepted quantities and lithium batteries, for which there are special types of services. This service is available for road transport.



The International  
Specialists

Services

How to Ship  
with DHL Express

Shipping  
Tools

Zones and  
Rates

Simple  
Rules

Export  
Services

Import  
Services

E-commerce

Optional  
Services

Surcharges

Custom  
Services

Non-Standard  
Service

## SURCHARGES CONTINUED

### Non Stackable Pallet

[View charges](#)

This fixed surcharge is applied to every pallet within a shipment that cannot be stacked, either on request by the shipper, or because of its shape, content or packaging. This surcharge applies to domestic and international shipments.

### Oversized Piece

[View charges](#)

This fixed surcharge applies to every piece, including a pallet, with a single dimension in excess of 120cm.

### Overweight Piece

[View charges](#)

A fixed surcharge is applied to every piece, including a pallet, that exceeds a scale or volumetric weight of 70kg.

### Remote Area Service

[View charges](#)

Service which makes shipment pickup and delivery possible in a remote location which is not normally covered by DHL Express. The charge will be billed for pickup from remote location and for delivery to remote location.

### Elevated Risk

[View charges](#)

Additional surcharges apply when shipping to a destination country where DHL Express is operating at elevated risk due to continuous state of war, civil unrest or continuous threats from terrorism. The list of destination countries in scope is published online at [dhl.com.pl/exp-en/express/shipping/shipping\\_advice/surcharges.html](https://dhl.com.pl/exp-en/express/shipping/shipping_advice/surcharges.html).

### Restricted Destination

[View charges](#)

A surcharge applies when shipping non-document products to a destination country that is subject to specific trade restrictions imposed by the UN Security Council. The list of destination countries in scope is published online at [dhl.com.pl/exp-en/express/shipping/shipping\\_advice/surcharges.html](https://dhl.com.pl/exp-en/express/shipping/shipping_advice/surcharges.html).

### Exporter Validation

[View charges](#)

Exporter Validation surcharges apply when shipping to a destination country or entity that is subject to trade restrictions imposed by national legislation such as the EEAS of the European Union or the US Office of Foreign Assets Control. The list of destination countries in scope is published online

at [dhl.com.pl/exp-en/express/shipping/shipping\\_advice/surcharges.html](https://dhl.com.pl/exp-en/express/shipping/shipping_advice/surcharges.html).

### Delivery Address Correction

[View charges](#)

If delivery address provided by the sender is incorrect, DHL Express will ascertain the correct one (within Service Area delivery) with either receiver or sender.

### Data Entry

[View charges](#)

This fixed surcharge applies for each shipment consigned with non-electronic, paper based manual waybills. Electronic shipping documentation incurs no additional charges.

### Emergency Situations

DHL Express reserves the right to apply surcharges to retrieve costs related to temporary emergencies beyond DHL's control that could not be reasonably foreseen. All such surcharges will be temporary and will apply except for rates. The customer will receive written notification eight days in advance of any additional extra charges, stating the reasons for the charge.





The International  
Specialists

Services

How to Ship  
with DHL Express

Shipping  
Tools

Zones and  
Rates

Simple  
Rules

Export  
Services

Import  
Services

E-commerce

Optional  
Services

Surcharges

Custom  
Services

Non-Standard  
Service

## CUSTOMS SERVICES

DHL Express is the international specialist in shipping, with extensive knowledge and experience of dealing with customs topics worldwide. For your peace of mind, we provide a wide range of customs support for standard as well as non-routine customs-clearance processes. By making sure that clearance is a smooth and efficient process, we ensure your shipments arrive as quickly as possible, and leave you free to focus on your core business. With our online tool [tas.dhl.com/tas/servlet/login](https://tas.dhl.com/tas/servlet/login) we provide essential customs information to help you prepare your shipments.

### De Minimis Collective Customs Clearance

[View charges](#)

The service enables collective customs clearance of de minimis packages with low value of below 22 EUR for import shipment and up to 1000 EUR for export shipments. There are no customs duties or taxes payable for de minimis courier shipments.

### Low Value Customs Clearance

[View charges](#)

The service provides customs clearance for low value shipments that have a value above 22 EUR, and which may be exempted from customs duties or taxes based on separate provisions.

### Formal Clearance

[View charges](#)

Applied in selected countries, when importing goods with an aggregated declaration value or weight exceeding the limits set by destination Customs Authorities, or due to other regulatory requirements are excluded from routine clearance on a consolidated manifest and thus require clearance under an individual entry form.

### Single Clearance

[View charges](#)

DHL will apply a charge if the Importer requests a formal entry when the shipment actually qualifies for an informal or de minimis entry on the consolidated manifest.

### Disbursement Fee

[View charges](#)

On behalf of the importer or the receiver, DHL Express covers the costs of duties and taxes billed by the Customs Office during clearance. This service accelerates customs clearance.

### Authorization of Customs Clearance

[View charges](#)

The service where DHL Express contacts the importer before the clearance starts. The contact is initiated on importer's demand.

### Multiline Entry Clearance

[View charges](#)

The clearance of a shipment with multiple commodities or multiple origins for the same commodity. Charges apply when 5 or more lines are recorded on the customs clearance, for example with different commodities or different countries of manufacture. Charges apply for all lines above 5th line. The costs of this service shall be borne by the importer/exporter, recipient/sender - as authorized Customs Agency DHL Express.

### Bonded Transit

[View charges](#)

At customer's request, the transit of a shipment under customs bond. Can arise when delivering ship spares to a foreign ship at anchor, aircraft parts to an aircraft on ground or to a customer's own bonded warehouse. Can apply also when shipments move domestically from/to a Free Trade Zone/Bonded Warehouse.

### Clearance Data Modification

[View charges](#)

A surcharge applies in case the customs declared value of a shipment requires modification either before or during the customs clearance process.

### Post Clearance Modification

[View charges](#)

DHL can modify the value, commodity, country of manufacture, or terms of trade information after the import clearance process for goods, to correct or elaborate on what was submitted previously to Customs. Modifications are also necessary when import details such as the VAT number are incorrect on the declaration.

### Initial Revision of Shipment

[View charges](#)

Initial revision of shipment at customer's request in order to make sure of the package content. As requested by the customer, goods are labeled as "sample" to be exempted from customs duties and taxes.

# SERVICES



The International Specialists

Services

How to Ship with DHL Express

Shipping Tools

Zones and Rates

Simple Rules

Export Services

Import Services

E-commerce

Optional Services

Surcharges

Custom Services

Non-Standard Service

## CUSTOMS SERVICES CONTINUED

### Bonded Storage

[View charges](#)

Storage charges apply when the shipment cannot be released by Customs due to inaccurate or missing paperwork.

Charges take effect three calendar days after the freight arrival date or broker notification, whichever is later. The charge applies to the duty and taxes payer.

### Temporary Customs Clearance

[View charges](#)

The service consists of temporary clearance, outward or inward processing while DHL Express prepares the application to the Customs Office.

### Preferential Origin

[View charges](#)

Preparing a certificate of origin on behalf of the customer and based on documents provided. Legalization of the document in the local Customs Office.

### Broker Notification

[View charges](#)

At the customer's request, DHL will provide the necessary paperwork to the customer's designated broker to perform the import clearance and resume the delivery to the final destination once the clearance is complete. DHL is subsequently not responsible for the timeliness of the submission to customs or for the release of the shipment.

### Release to Broker

[View charges](#)

At importers request, the release of a DHL Express shipment to the customers designated customs broker of choice. DHL will not only transfer the necessary customs documentation but also move the inbound shipment from the point of arrival to the brokers location within the same customs office. The broker performs the last mile delivery.

### Export Declaration

[View charges](#)

At the client's request, the export declaration required to issue the IE599 message. Applies also in countries where an export declaration is required for shipments containing controlled commodities or exceeding a certain value threshold or weight.

### Permits & Licenses

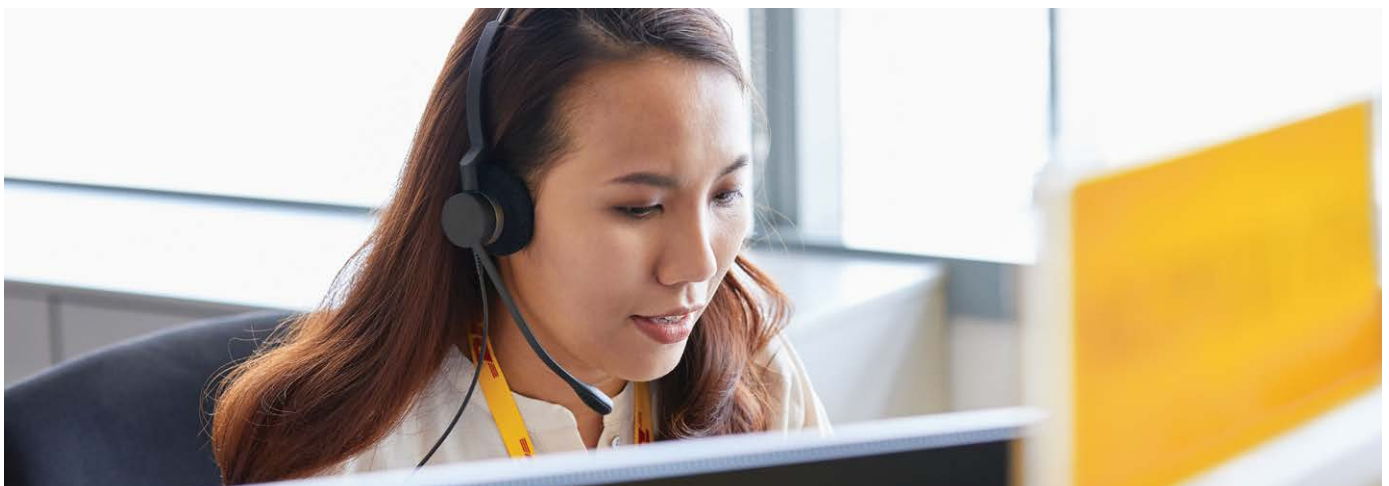
[View charges](#)

To accelerate import of selected controlled commodities, such as medical devices, pharmaceuticals, computer monitors, laser CD players, cosmetics, eyeglasses, food and food products, DHL is required to file specific information in order to obtain the required import permits or licenses.

### Brexit Adjustment

[View charges](#)

The surcharge is added to shipments (air and road to/from Great Britain) due to additional operational activities (e.g. changes of routes for transported shipments, required permits and licenses, changes in customs clearances) due to changes in trade regulations between the EU and Great Britain.





The International  
Specialists

Services

How to Ship  
with DHL Express

Shipping  
Tools

Zones and  
Rates

Simple  
Rules

Export  
Services

Import  
Services

E-commerce

Optional  
Services

Surcharges

Custom  
Services

Non-Standard  
Service

## NON-STANDARD SERVICE

### Perfect solution for urgent deliveries

- Fast shipment pickup, shipping earliest possible flight, delivery to the indicated address in the shortest possible time
- Dedicated transport of shipments from DHL Express Service Center directly to the recipient (immediately after the arrival of the aircraft or after Customs clearance)
- Shipment pickup from the sender after the courier's working hours and delivery to the nearest DHL terminal
- Dedicated air or road transport for urgent shipments (courier on board) and non-standard dimensions/weight (cargo charter)
- First Flight Out / Next Flight Out - service of urgent cargo sent from or outside the European Union using the fastest available commercial air connections (both passenger and freight)
- High value transport and convoys service
- Dangerous goods transport (DGR and ADR)
- Full dangerous shipments support i.e. packaging, labeling, issuing DGD in line with ICAO guidelines
- Road and air transport at controlled temperatures

Operating Monday to Friday, from 7 a.m. to 10 p.m.  
Shipments are delivered 24/7.

Telephone number: +48 22 4209 191  
[SameDayPoland@dhl.com](mailto:SameDayPoland@dhl.com)  
[ustugi.niestandardowe@dhl.com](mailto:ustugi.niestandardowe@dhl.com)



Detailed information about products and services available can be found at [dhl.com.pl/exp-en/express/export\\_services/export\\_same\\_day.html](https://dhl.com.pl/exp-en/express/export_services/export_same_day.html) or at the DHL Express Customer Service – International Shipments [dhl.com.pl/exp-en/contact\\_center/contact\\_express.html](https://dhl.com.pl/exp-en/contact_center/contact_express.html).

# HOW TO SHIP WITH DHL EXPRESS



The International  
Specialists

Services

How to Ship  
with DHL Express

Shipping  
Tools

Zones and  
Rates

Simple  
Rules

Preparing Your Shipment

Packaging Your Shipment

Paying for Your Shipment

## PREPARING YOUR SHIPMENT: AS EASY AS 1-2-3

### 1 Shipment weight

Please weigh and measure your shipment. If you are sending a large but lightweight shipment, where its volumetric (dimensional) weight exceeds its actual weight, the cost of the shipment is calculated on the space your consignment takes up on the aircraft. This is a standard IATA method. To calculate the volumetric weight of your shipment, simply multiply the length (cm) by the height (cm), multiply that sum by the width (cm), then divide the total sum by 5,000 for each piece in the shipment. Any piece in the shipment may be re-weighed and/or re-measured by DHL to confirm this calculation. Helpful application calculating volumetric weight is available at [dhl.com.pl/exp-en/tools/volumetric\\_weight\\_express.html](https://dhl.com.pl/exp-en/tools/volumetric_weight_express.html).

### 2 Documentation required: waybill

All shipments sent with DHL Express need to have a fully completed DHL waybill or label securely attached to each piece. This will enable the successful movement of your shipment through the DHL Express network. Each waybill or label is individually numbered to allow you to track your shipment from collection through to delivery. Your shipment may also need to be accompanied by required customs documentation, such as a commercial or pro-forma invoice, as well as additional paperwork depending on the contents and value of the shipment and the country you are sending to.

### 3 Documentation required: invoice

A commercial or pro-forma invoice is required when sending goods to countries and territories outside your origin country or customs union. All non-document shipments must be accompanied by an invoice. This is essentially a declaration containing all the details of a transaction and is used by customs authorities to assess if duties or taxes are payable. A commercial invoice is used when goods are part of a commercial transaction or intended for resale. A pro-forma invoice is used when sending goods of no commercial value (for example, when sending samples).

#### Important:

Combined maximum actual weight of all pieces of the shipment cannot exceed 1,000kg. Maximum actual weight of a single piece of the shipment cannot exceed 300kg.



# HOW TO SHIP WITH DHL EXPRESS



The International  
Specialists

Services

How to Ship  
with DHL Express

Shipping  
Tools

Zones and  
Rates

Simple  
Rules

Preparing Your Shipment

Packaging Your Shipment

Paying for Your Shipment

## PREPARING YOUR SHIPMENT

Your invoice will require the following details:

### 1 BANK DETAILS

These are the bank details that will be used for the transaction between the seller and buyer. These details are not required for non-commercial/proforma invoices.

### 2 DESCRIPTION

Generic or broad descriptions are no longer permitted and are likely to cause delays. Descriptions should include the items, how many there are, what they are made of, and what they will be used for. For example, describing items as 'samples', 'parts' or 'spares' is not acceptable for customs classification, safety and security reasons.

### 3 COMMODITY CODE

This is the product identification code used by the exporting country to classify the goods to be exported. It assists clearance and avoids delays.

### 4 COUNTRY OF MANUFACTURE/ORIGIN

This relates to the place of manufacture, not the country of export. If items are manufactured in more than one country, please list the origins.

### 5 TOTAL DECLARED VALUE

This is the total value of the transaction for customs purposes based on the Incoterm selected. The total declared value should include freight and insurance charges if the seller is responsible for these two elements.

### 6 TYPE OF EXPORT

The options are: (1) Permanent; (2) Temporary; and (3) Repair & Return.

Full description of goods	Commodity code	Item quantity	Unit value [Currency]	Subtotal value [Currency]	Net weight	Country of manufacture/origin
Freight						
Insurance						
Total declared value/currency				Total net weight/kg(s)		
Total pieces				Total gross weight/kg(s)		
6 Type of export 7 Incoterms 8 Reason for export I/We hereby certify that the information contained in this invoice is true and correct and that the contents of the shipments are as stated above.						
Position in company				Signature		
				Company stamp		



### 7 INCOTERM

Insert the Incoterm that best describes the terms of the transaction. For example, DAP (Delivered At Place).

### 8 REASON FOR EXPORT

This could be: For Sale; For Repair; After Repair; Gift; Sample; Personal Use Not For Resale; Replacement; Intercompany Transfer; or Personal Effects.



# HOW TO SHIP WITH DHL EXPRESS



The International  
Specialists

Services

How to Ship  
with DHL Express

Shipping  
Tools

Zones and  
Rates

Simple  
Rules

Preparing Your Shipment

Packaging Your Shipment

Paying for Your Shipment

## PACKAGING YOUR SHIPMENT

To ensure that your shipments travel safely and securely through the DHL Express global network, it is important that they are packaged and labeled correctly.

### Packaging guidelines

- If you are re-using envelopes or boxes, please ensure that old labels and markings are removed
- Securely fix a waybill to each piece in your shipment. The waybill can be thought of as the shipment's airline ticket and it will delay delivery if it becomes separated from your shipment
- The barcodes on the waybill are scanned at numerous points during your shipment's journey. Please ensure the barcode is flat and not covered by tape, shrinkwrap or strapping
- Place a waybill on the top or side of each piece in your shipment and please ensure it does not overlap the corners or edges of boxes
- Use adequate protective wrapping for fragile or delicate items and ensure they are packed as far away as possible from the corners of boxes
- To prevent injury to our employees, please pay special attention to the packaging of sharp items. There should not be any possibility of the contents piercing the packaging
- Any individual pieces over 70kg should be placed on a pallet. If you are sending a multi-piece shipment, it is not necessary to place the individual pieces on a pallet unless they exceed 70kg. For example, a shipment comprising four 25kg pieces does not have to be placed on a pallet



### DHL packaging

We offer a range of high-quality DHL-branded packaging items, suitable for shipping items of all shapes and sizes. The items available include:



**Cardboard envelope**  
Dimensions: 35 x 27.5cm  
Suggested weight: up to 0.5kg  
Free packaging



**Standard flyer**  
Protection for main packaging  
Dimensions: 42.5 x 32.5cm  
Free packaging



**Box 2**  
Dimensions: 33.7 x 18.2 x 10cm  
Suggested weight: up to 1kg  
Free packaging



**Box 3**  
Dimensions: 33.7 x 32.2 x 10cm  
Suggested weight: up to 2kg  
Free packaging



**Box 4**  
Dimensions: 33.7 x 32.2 x 18cm  
Suggested weight: up to 5kg  
Free packaging

For more information please refer to the Packing Guide available on [dhl.com.pl/exp-en/express/shipping/shipping\\_advice/packaging\\_advice.html](https://dhl.com.pl/exp-en/express/shipping/shipping_advice/packaging_advice.html).

## PAYING FOR YOUR SHIPMENT

Customers can pay for DHL Express services either with cash, a credit card (at a DHL Express Customer Service Point only) or by bank transfer (after opening a DHL Express Customer Account – on the basis of separate agreement concerning such payment method). Custom and tax duties can be paid with cash, a credit card or by bank transfer (in the latter case, only on the basis of separate DHL Express approval expressed after the customer's corresponding obligation).

# SHIPPING TOOLS



The International  
Specialists

Services

How to Ship  
with DHL Express

Shipping  
Tools

Zones and  
Rates

Simple  
Rules

## SHIPPING TOOLS

### Making shipping easier

DHL Express offers a choice of electronic solutions to suit even the most demanding requirements. We invest continually in market-leading technologies to help users to manage and monitor shipments, create shipping labels, get quotes, schedule courier pickups, and more.

Our electronic solutions cover online and offline options, as well as integrated solutions. In addition, we provide industry-specific solutions tailored for the Life Sciences and Technology sectors.

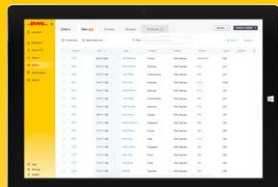
MyDHL+ re-imagines the way the shipping business does business, by combining the tools and services our

customers use most. With its mobile friendly and intuitive interface, customers can now import, export, schedule a pickup, track shipments and pay bills more quickly than ever – all in one visit, with one password and zero headaches. MyDHL+ makes it incredibly easy to navigate the complexities of international shipping.

Try it out now at [mydhl.express.dhl/pl/en/home.html](https://mydhl.express.dhl/pl/en/home.html).

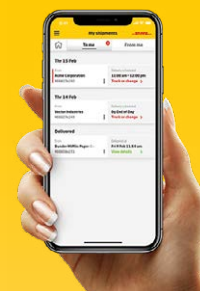
### DHL EXPRESS COMMERCE

Take your website international with DHL Express Commerce. Offer your customers all the benefits of DHL Express at your checkout in real-time. Import, manage and ship their orders quickly and efficiently with no complicated development. Add the power of DHL Express to your e-commerce business quickly and easily, giving you the competitive edge. DHL Express Commerce integrates with the biggest e-commerce platforms, including: Magento, Shopify, WooCommerce, Amazon and eBay.



### Easyship

This is an offline advanced shipment management tool for any organization with large shipping volumes or regular scheduled deliveries. DHL Easyship can handle the needs of multinational supply chains or any business with a central shipping function. It is a Windows-based system, which is easy to use yet very powerful – enabling you to handle everything from regular mailshots to multi-stage shipping processes.



The new DHL Express Mobile app lets you track your shipments and manage your deliveries all in one place. You can locate the nearest DHL Service Point for parcel drop off or collection, and quickly check shipping rates too – right on your smartphone. Advanced GPS location services and camera barcode scanning are also available. Download DHL Express Mobile today, on [Android](#) or [iPhone](#).

### Customer shipping integration

Using EDI and XML Services enables you to incorporate DHL's online shipping capabilities into your own website, warehouse or customer service application. This provides global shipment tracking while making it faster and easier to access information about transit times, rates and courier bookings.

# ZONES AND RATES



The International Specialists

Services

How to Ship with DHL Express

Shipping Tools

Zones and Rates

Simple Rules

Shipment Pricing

Optional Services

Surcharges

Customs Services

Service Capability and Rating Zones

Export Services

Import Services

## CALCULATE THE PRICE OF YOUR SHIPMENT: AS EASY AS 1-2-3

- 1** Choosing a service: description of standard international service characteristics can be found on [pages 3-14](#). Weighing and measuring the shipment: the higher weight (actual or volumetric) is used to calculate the shipment cost. See [page 15](#) for details about shipment weight.
- 2** Determining the rate zone of the destination: see 'Service Capability and Rate Zones' tables on [pages 22-25](#) for the destination country's zone.
- 3** Calculating the price of the shipment: see basic rates on [pages 28-44](#). Additional charges such as cost of additional services or customs services should be added to the basic net price. Fuel fee is applied to the weight charge of each shipment and any transportation related surcharges. The resulting sum should be increased by adding any taxes on goods and services, as appropriate.



## OPTIONAL SERVICES

Optional services	<a href="#">View explanation</a>	Charging method	Charge
Delivery service by 9:00		Per shipment	111 PLN
Delivery service by 10:30 (to the USA)		Per shipment	44 PLN
Delivery service by 12:00		Per shipment	22 PLN
Shipment Insurance		Per shipment	1% of declared value, not less than 52 PLN
Extended Liability		Per shipment	17 PLN
GoGreen Climate Neutral		Per shipment	0.44 PLN for each kg of the shipment
Verbal Delivery Notification		Per shipment	22 PLN
Proactive Tracking		Per shipment	22 PLN
Proof of Delivery (POD)		Per shipment	22 PLN
Electronic Proof of Delivery (ePOD)		Per shipment	Free of charge
Residential Address		Per shipment	13 PLN
Duties Taxes Paid (DTP)		Percentage of fiscal charges	2% of fiscal charges with a minimum of 67 PLN
Importer of Records		Per shipment	80 PLN
Saturday Pickup		Per shipment	88 PLN
Saturday Delivery		Per shipment	128 PLN
Neutral Delivery		Per shipment	22 PLN
Change of Payer		Per invoice	128 PLN
eInvoice			Free of charge
Packaging			Dependant on the selected packaging
Dedicated Delivery		Per shipment	177 PLN per shipment or 2 PLN per kg
Hold for Collection		Per shipment	Free of charge
Dedicated Pickup		Per shipment	88 PLN per shipment or 2 PLN per kg
Direct Signature		Per shipment	22 PLN
Paperless Trade		Per shipment	Free of charge
Leave with Neighbor		Per shipment	Free of charge

All prices are in PLN and will be increased by adding any appropriate taxes on goods and services. Find more information on Optional Services at [dhl.com.pl/exp-en/contact\\_center/contact\\_express.html](https://dhl.com.pl/exp-en/contact_center/contact_express.html). Should you have any questions, please contact us at [dhl.com.pl/exp-en/contact\\_center/contact\\_express.html](https://dhl.com.pl/exp-en/contact_center/contact_express.html).

# ZONES AND RATES



The International  
Specialists

Services

How to Ship  
with DHL Express

Shipping  
Tools

Zones and  
Rates

Simple  
Rules

Shipment  
Pricing

Optional  
Services

Surcharges

Customs  
Services

Service Capability  
and Rating Zones

Export  
Services

Import  
Services

## SURCHARGES

<b>Surcharges</b>	<a href="#">View explanation</a>	<b>Charging method</b>	<b>Charge</b>
Fuel Surcharge		Variable fee	Current rate available at <a href="https://dhl.com.pl/exp-en/express/shipping/shipping_advice/express_fuel_surcharge.html">dhl.com.pl/exp-en/express/shipping/shipping_advice/express_fuel_surcharge.html</a>
Category B Biological Materials (UN3373) <sup>†</sup>		Per shipment	Service available for DHL Medical Express only
Dry Ice (UN1845) <sup>†</sup>		Per shipment	45 PLN
Lithium-ion Batteries (Section II, PI966) <sup>†</sup>		Per shipment	22 PLN
Lithium-ion Batteries (Section II, PI967) <sup>†</sup>		Per shipment	Free of charge
Lithium-metal Batteries (Section II, PI 969) <sup>†</sup>		Per shipment	22 PLN
Lithium-metal Batteries (Section II, PI 970) <sup>†</sup>		Per shipment	Free of charge
ID 8000 Consumer Goods <sup>†</sup>		Per shipment	88 PLN
Dangerous Goods <sup>†</sup>		Per shipment	354 PLN
Dangerous Goods in Excepted Quantities (EQ) <sup>†</sup>		Per shipment	22 PLN
Dangerous Goods in Limited Quantities (LQ) <sup>†</sup>		Per shipment	88 PLN
Non Stackable Pallet		Per piece	780 PLN
Oversized Piece		Per piece	350 PLN
Overweight Piece		Per piece	380 PLN
Remote Area Service		Per shipment	2 PLN for each kg of the shipment, not less than 88 PLN
Elevated Risk		Per shipment	88 PLN
Restricted Destination		Per shipment	133 PLN
Exporter Validation		Per shipment	133 PLN
Delivery Address Correction		Per shipment	44 PLN
Data Entry <sup>†</sup>		Per shipment	21 PLN

<sup>†</sup>Additional charge applies for the Customers with permanent DHL Express transportation service contract.

All prices are in PLN and will be increased by adding any appropriate taxes on goods and services.

Should you have any questions, please contact us on [dhl.com.pl/exp-en/contact\\_center/contact\\_express.html](https://dhl.com.pl/exp-en/contact_center/contact_express.html).

# ZONES AND RATES



The International Specialists	Services	How to Ship with DHL Express	Shipping Tools	Zones and Rates	Simple Rules	
Shipment Price	Optional Services	Surcharges	Customs Services	Service Capability and Rating Zones	Export Services	Import Services

## CUSTOMS SERVICES

Customs services <a href="#">View explanation</a>	Charging method	Net charge	Gross charge*
De Minimis Collective Customs Clearance	Per shipment	Free of charge	Free of charge
Low Value Customs Clearance	Per shipment	Free of charge	Free of charge
Formal Clearance	Per shipment	45 PLN	55,35 PLN
Single Clearance	Per shipment	45 PLN	55,35 PLN
Disbursement fee	Per shipment	2,5% of customs duties and taxes, not less than 69 PLN	2,5% of customs duties and taxes, not less than 84,87 PLN
Authorization of Customs Clearance	Per shipment	45 PLN	55,35 PLN
Multiline Entry Clearance	Rate per line, after the 5th line	22 PLN	27,06 PLN
Bonded Transit	Per shipment	200 PLN	246 PLN
Clearance Data Modification	Per shipment	220 PLN	270,60 PLN
Post Clearance Modification	Per shipment	220 PLN	270,60 PLN
Initial Revision of Shipment	Per shipment	89 PLN	109,47 PLN
Bonded Storage	Per shipment per calendar day and per kg/day	22 PLN per shipment and 0,44 PLN per kg per day	27,06 PLN per shipment and 0,54 PLN per kg per day
Temporary Import/Export Customs Clearance	Per shipment	177 PLN	217,71 PLN
Preferential Origin	Per document	22 PLN	27,06 PLN
Broker Notification	Per shipment	45 PLN	55,35 PLN
Release to Broker	Per shipment	177 PLN	217,71 PLN
Export Declaration	Per shipment	45 PLN	55,35 PLN
Permits and Licenses	Per shipment	87 PLN	107,01 PLN
Brexit Adjustment	Per shipment	1,12 PLN for each kg of the shipment, not less than 22,30 PLN	1,38 PLN for each kg of the shipment, not less than 27,43 PLN

\*23% Value Added Tax (VAT) applied.

DHL reserves the right to call for prepaid payment of customs and tax costs, as well as commission for clearance of dutiable packages.

More information on customs clearance can be found at [dhl.com.pl/exp-en/express/customs\\_support.html](https://dhl.com.pl/exp-en/express/customs_support.html).

# ZONES AND RATES



The International  
Specialists

Services

How to Ship  
with DHL Express

Shipping  
Tools

Zones and  
Rates

Simple  
Rules

Shipment  
Price

Optional  
Services

Surcharges

Customs  
Services

Service Capability  
and Rating Zones

Export  
Services

Import  
Services

## SERVICE CAPABILITY AND RATING ZONES\*

Country/territory	Code	Zone	Time Definite Services				Day Definite Services	
			DHL Express 9:00	DHL Express 12:00	DHL Express Worldwide	Imports	DHL Economy Select	DHL Economy Select Import
Afghanistan	AF	8			✓	✓		
Albania	AL	5	✓	✓	✓	✓		
Algeria	DZ	8		✓	✓	✓		
American Samoa	AS	8	✓	✓	✓	✓		
Andorra	AD	4	✓	✓	✓	✓		
Angola	AO	8	✓	✓	✓	✓		
Anguilla	AI	8			✓	✓		
Antigua and Barbuda	AG	8	✓	✓	✓	✓		
Argentina	AR	8	✓	✓	✓	✓		
Armenia	AM	7		✓	✓	✓		
Aruba	AW	8	✓	✓	✓	✓		
Australia	AU	8	✓	✓	✓	✓		
Austria	AT	2	✓	✓	✓	✓	✓	✓
Azerbaijan	AZ	7		✓	✓	✓		
Bahamas	BS	8	✓	✓	✓	✓		
Bahrain	BH	7	✓	✓	✓	✓		
Bangladesh	BD	8	✓	✓	✓	✓		
Barbados	BB	8	✓	✓	✓	✓		
Belarus	BY	7		✓	✓	✓		
Belgium	BE	2	✓	✓	✓	✓	✓	✓
Belize	BZ	8	✓	✓	✓	✓		
Benin	BJ	8		✓	✓	✓		
Bermuda	BM	8		✓	✓	✓		
Bhutan	BT	8			✓	✓		
Bolivia	BO	8	✓	✓	✓	✓		
Bonaire	XB	8		✓	✓	✓		
Bosnia and Herzegovina	BA	5	✓	✓	✓	✓		
Botswana	BW	8	✓	✓	✓	✓		
Brazil	BR	8	✓	✓	✓	✓		
Brunei Darussalam	BN	8		✓	✓	✓		
Bulgaria	BG	3	✓	✓	✓	✓	✓	✓
Burkina Faso	BF	8	✓	✓	✓	✓		
Burundi	BI	8			✓	✓		
Cambodia	KH	8	✓	✓	✓	✓		
Cameroon	CM	8		✓	✓	✓		
Canada	CA	5	✓	✓	✓	✓		
Canary Islands, The	IC	4		✓	✓	✓		
Cape Verde	CV	8			✓	✓		
Cayman Islands	KY	8		✓	✓	✓		
Central African Republic	CF	8			✓	✓		
Chad	TD	8			✓	✓		
Chile	CL	8	✓	✓	✓	✓		
China	CN	7	✓	✓	✓	✓		
Colombia	CO	8	✓	✓	✓	✓		
Comoros	KM	8			✓	✓		
Congo	CG	8			✓	✓		
Congo, The Democratic Republic of	CD	8		✓	✓	✓		
Cook Islands	CK	8			✓	✓		
Costa Rica	CR	8	✓	✓	✓	✓		
Cote d'Ivoire	CI	8	✓	✓	✓	✓		
Croatia	HR	3		✓	✓	✓	✓	✓
Cuba	CU	8			✓	✓		
Curacao	XC	8	✓	✓	✓	✓		
Cyprus	CY	3	✓	✓	✓	✓		
Czech Republic	CZ	1	✓	✓	✓	✓	✓	✓
Denmark	DK	3	✓	✓	✓	✓	✓	✓
Djibouti	DJ	8			✓	✓		
Dominica	DM	8			✓	✓		
Dominican Republic	DO	8	✓	✓	✓	✓		

✓ = Service available

Table continues overleaf

\*For transit times and the availability of Time Definite Services for your origin and destination address please refer to the DHL Capability Tool at <http://dct.dhl.com/>. In the case of Day Definite Services, please contact us at [dhl.com.pl/exp-en/contact\\_center/contact\\_express.html](http://dhl.com.pl/exp-en/contact_center/contact_express.html).

# ZONES AND RATES



The International  
Specialists

Services

How to Ship  
with DHL Express

Shipping  
Tools

Zones and  
Rates

Simple  
Rules

Shipment  
Price

Optional  
Services

Surcharges

Customs  
Services

Service Capability  
and Rating Zones

Export  
Services

Import  
Services

## SERVICE CAPABILITY AND RATING ZONES\*

Country/territory	Code	Zone	Time Definite Services				Day Definite Services	
			DHL Express 9:00	DHL Express 12:00	DHL Express Worldwide	Imports	DHL Economy Select	DHL Economy Select Import
Ecuador	EC	8	✓	✓	✓	✓		
Egypt	EG	8	✓	✓	✓	✓		
El Salvador	SV	8	✓	✓	✓	✓		
Equatorial Guinea	GQ	8			✓	✓		
Eritrea	ER	8			✓	✓		
Estonia	EE	3	✓	✓	✓	✓	✓	✓
Ethiopia	ET	8			✓	✓		
Eswatini	SZ	8	✓	✓	✓	✓		
Falkland Islands (Malvinas)	FK	8			✓	✓		
Faroe Islands	FO	6			✓	✓		
Fiji	FJ	8			✓	✓		
Finland	FI	3	✓	✓	✓	✓	✓	✓
France	FR	2	✓	✓	✓	✓	✓	✓
French Guiana	GF	8			✓	✓		
French Polynesia	PF	8			✓	✓		
Gabon	GA	8		✓	✓	✓		
Gambia	GM	8			✓	✓		
Georgia	GE	7		✓	✓	✓		
Germany	DE	1	✓	✓	✓	✓	✓	✓
Ghana	GH	8	✓	✓	✓	✓		
Gibraltar	GI	4	✓	✓	✓	✓	✓	✓
Greece	GR	3	✓	✓	✓	✓	✓	✓
Greenland	GL	6			✓	✓		
Grenada	GD	8			✓	✓		
Guadeloupe	GP	8	✓	✓	✓	✓		
Guam	GU	8			✓	✓		
Guatemala	GT	8	✓	✓	✓	✓		
Guernsey	GG	4	✓	✓	✓	✓		✓
Guinea	GN	8		✓	✓	✓		
Guinea-Bissau	GW	8			✓	✓		
Guyana	GY	8	✓	✓	✓	✓		
Haiti	HT	8		✓	✓	✓		
Honduras	HN	8	✓	✓	✓	✓		
Hong Kong SAR China	HK	7	✓	✓	✓	✓		
Hungary	HU	3	✓	✓	✓	✓	✓	✓
Iceland	IS	6	✓	✓	✓	✓		
India	IN	7	✓	✓	✓	✓		
Indonesia	ID	7	✓	✓	✓	✓		
Iran (Islamic Republic of)	IR	8	✓	✓	✓	✓		
Iraq	IQ	8			✓	✓		
Ireland	IE	3	✓	✓	✓	✓	✓	✓
Israel	IL	4	✓	✓	✓	✓		
Italy	IT	2	✓	✓	✓	✓	✓	✓
Jamaica	JM	8		✓	✓	✓		
Japan	JP	7	✓	✓	✓	✓		
Jersey	JE	4	✓	✓	✓	✓		✓
Jordan	JO	7	✓	✓	✓	✓		
Kazakhstan	KZ	8	✓	✓	✓	✓		
Kenya	KE	8	✓	✓	✓	✓		
Kiribati	KI	8			✓	✓		
Korea, Dem. People's Republic	KP	8			✓	✓		
Korea, Republic of	KR	7	✓	✓	✓	✓		
Kosovo	KV	5	✓	✓	✓	✓		
Kuwait	KW	7	✓	✓	✓	✓		
Kyrgyzstan	KG	8		✓	✓	✓		
Lao People's Democratic Republic	LA	8	✓	✓	✓	✓		
Latvia	LV	3	✓	✓	✓	✓	✓	✓
Lebanon	LB	8	✓	✓	✓	✓		
Lesotho	LS	8	✓	✓	✓	✓		

✓ = Service available

Table continues overleaf

\*For transit times and the availability of Time Definite Services for your origin and destination address please refer to the DHL Capability Tool at <http://dct.dhl.com/>. In the case of Day Definite Services, please contact us at [dhl.com.pl/exp-en/contact\\_center/contact\\_express.html](http://dhl.com.pl/exp-en/contact_center/contact_express.html).

# ZONES AND RATES



The International Specialists

Services

How to Ship with DHL Express

Shipping Tools

Zones and Rates

Simple Rules

Shipment Price

Optional Services

Surcharges

Customs Services

Service Capability and Rating Zones

Export Services

Import Services

## SERVICE CAPABILITY AND RATING ZONES\*

Country/territory	Code	Zone	Time Definite Services				Day Definite Services	
			DHL Express 9:00	DHL Express 12:00	DHL Express Worldwide	Imports	DHL Economy Select	DHL Economy Select Import
Liberia	LR	8			✓	✓		
Libya	LY	8			✓	✓		
Liechtenstein	LI	4	✓	✓	✓	✓	✓	✓
Lithuania	LT	3	✓	✓	✓	✓	✓	✓
Luxembourg	LU	2	✓	✓	✓	✓	✓	✓
Macau SAR China	MO	8	✓	✓	✓	✓		
Madagascar	MG	8		✓	✓	✓		
Malawi	MW	8			✓	✓		
Malaysia	MY	8	✓	✓	✓	✓		
Maldives	MV	8			✓	✓		
Mali	ML	8			✓	✓		
Malta	MT	3	✓	✓	✓	✓		
Marshall Islands	MH	8			✓	✓		
Martinique	MQ	8	✓	✓	✓	✓		
Mauritania	MR	8	✓	✓	✓	✓		
Mauritius	MU	8	✓	✓	✓	✓		
Mayotte	YT	8			✓	✓		
Mexico	MX	5	✓	✓	✓	✓		
Micronesia	FM	8			✓	✓		
Moldova, Republic of	MD	5		✓	✓	✓		
Monaco	MC	2	✓	✓	✓	✓		✓
Mongolia	MN	8			✓	✓		
Montserrat	MS	8	✓	✓	✓	✓		
Morocco	MA	8	✓	✓	✓	✓		
Mozambique	MZ	8	✓	✓	✓	✓		
Myanmar (Birma)	MM	8		✓	✓	✓		
Namibia	NA	8	✓	✓	✓	✓		
Nauru	NR	8			✓	✓		
Nepal	NP	8	✓	✓	✓	✓		
Netherlands	NL	2	✓	✓	✓	✓	✓	✓
Nevis	XN	8	✓	✓	✓	✓		
New Caledonia	NC	8			✓	✓		
New Zealand	NZ	8	✓	✓	✓	✓		
Nicaragua	NI	8	✓	✓	✓	✓		
Niger	NE	8			✓	✓		
Nigeria	NG	8	✓	✓	✓	✓		
Niue	NU	8			✓	✓		
North Macedonia	MK	5	✓	✓	✓	✓		
Northern Mariana Islands	MP	8			✓	✓		
Norway	NO	4	✓	✓	✓	✓	✓	✓
Oman	OM	7	✓	✓	✓	✓		
Pakistan	PK	8	✓	✓	✓	✓		
Palau	PW	8			✓	✓		
Panama	PA	8	✓	✓	✓	✓		
Papua New Guinea	PG	8			✓	✓		
Paraguay	PY	8	✓	✓	✓	✓		
Peru	PE	8	✓	✓	✓	✓		
Philippines	PH	8	✓	✓	✓	✓		
Portugal	PT	3	✓	✓	✓	✓	✓	✓
Puerto Rico	PR	8	✓	✓	✓	✓		
Qatar	QA	7	✓	✓	✓	✓		
Republic of Montenegro	ME	5	✓	✓	✓	✓		
Reunion	RE	8		✓	✓	✓		
Romania	RO	3	✓	✓	✓	✓	✓	✓
Russian Federation	RU	7	✓	✓	✓	✓		
Rwanda	RW	8			✓	✓		
Saint Eustatius	XE	8			✓	✓		
Saint Helena	SH	8			✓	✓		
Saint Kitts and Nevis	KN	8	✓	✓	✓	✓		

✓ = Service available

Table continues overleaf

\*For transit times and the availability of Time Definite Services for your origin and destination address please refer to the DHL Capability Tool at <http://dct.dhl.com/>. In the case of Day Definite Services, please contact us at [dhl.com.pl/exp-en/contact\\_center/contact\\_express.html](mailto:dhl.com.pl/exp-en/contact_center/contact_express.html).



# ZONES AND RATES



The International Specialists

Services

How to Ship with DHL Express

Shipping Tools

Zones and Rates

Simple Rules

Shipment Price

Optional Services

Surcharges

Customs Services

Service Capability and Rating Zones

Export Services

Import Services

## SERVICE CAPABILITY AND RATING ZONES\*

Country/territory	Code	Zone	Time Definite Services				Day Definite Services	
			DHL Express 9:00	DHL Express 12:00	DHL Express Worldwide	Imports	DHL Economy Select	DHL Economy Select Import
Saint Lucia	LC	8			✓	✓		
Saint Vincent and The Grenadines	VC	8			✓	✓		
Samoa	WS	8			✓	✓		
San Marino	SM	4	✓	✓	✓	✓		✓
Sao Tome and Principe	ST	8			✓	✓		
Saudi Arabia	SA	7	✓	✓	✓	✓		
Senegal	SN	8	✓	✓	✓	✓		
Serbia, Republic of	RS	5	✓	✓	✓	✓		
Seychelles	SC	8			✓	✓		
Sierra Leone	SL	8	✓	✓	✓	✓		
Singapore	SG	7	✓	✓	✓	✓		
Slovakia	SK	1	✓	✓	✓	✓	✓	✓
Slovenia	SI	3	✓	✓	✓	✓	✓	✓
Solomon Islands	SB	8			✓	✓		
Somalia	SO	8			✓	✓		
Somaliland, Republic of	XS	8			✓	✓		
South Africa	ZA	8	✓	✓	✓	✓		
South Sudan	SS	8			✓	✓		
Spain	ES	3	✓	✓	✓	✓	✓	✓
Sri Lanka	LK	8	✓	✓	✓	✓		
St. Barthelemy	XY	8	✓	✓	✓	✓		
St. Maarten	XM	8	✓	✓	✓	✓		
Sudan	SD	8		✓	✓	✓		
Suriname	SR	8		✓	✓	✓		
Sweden	SE	3	✓	✓	✓	✓	✓	✓
Switzerland	CH	4	✓	✓	✓	✓	✓	✓
Syrian Arab Republic	SY	8			✓	✓		
Taiwan	TW	7	✓	✓	✓	✓		
Tanzania, United Republic of	TZ	8	✓	✓	✓	✓		
Thailand	TH	7	✓	✓	✓	✓		
Timor-Leste, D.R. of	TL	8			✓	✓		
Togo	TG	8			✓	✓		
Tonga	TO	8			✓	✓		
Trinidad and Tobago	TT	8	✓	✓	✓	✓		
Tunisia	TN	8		✓	✓	✓		
Turkey	TR	4	✓	✓	✓	✓		
Turkmenistan	TM	8		✓	✓	✓		
Turks and Caicos Islands	TC	8	✓	✓	✓	✓		
Tuvalu	TV	8			✓	✓		
Uganda	UG	8	✓	✓	✓	✓		
Ukraine	UA	6	✓	✓	✓	✓		
United Arab Emirates	AE	7	✓	✓	✓	✓		
United Kingdom	GB	2	✓	✓	✓	✓	✓	✓
United States	US	5	10:30	✓	✓	✓		
Uruguay	UY	8	✓	✓	✓	✓		
Uzbekistan	UZ	8		✓	✓	✓		
Vanuatu	VU	8			✓	✓		
Venezuela	VE	8		✓	✓	✓		
Vietnam	VN	8	✓	✓	✓	✓		
Virgin Islands (British)	VG	8	✓	✓	✓	✓		
Virgin Islands (U.S.)	VI	8		✓	✓	✓		
Yemen	YE	8			✓	✓		
Zambia	ZM	8	✓	✓	✓	✓		
Zimbabwe	ZW	8			✓	✓		

✓ = Service available

\*For transit times and the availability of Time Definite Services for your origin and destination address please refer to the DHL Capability Tool at <http://dct.dhl.com/>. In the case of Day Definite Services, please contact us at [dhl.com.pl/exp-en/contact\\_center/contact\\_express.html](http://dhl.com.pl/exp-en/contact_center/contact_express.html).

# ZONES AND RATES



The International  
Specialists

Services

How to Ship  
with DHL Express

Shipping  
Tools

Zones and  
Rates

Simple  
Rules

Shipment  
Price

Optional  
Services

Surcharges

Customs  
Services

Service Capability  
and Rating Zones

Export  
Services

Import  
Services

## TRANSIT TIME<sup>1</sup>

Transit time			Transit time			Transit time			Transit time		
Country/territory	Time Definite	Day Definite	Country/territory	Time Definite	Day Definite	Country/territory	Time Definite	Day Definite	Country/territory	Time Definite	Day Definite
Afghanistan	3		Ghana	2-3		Lithuania	1-2		El Salvador	2	
Albania	1		Gibraltar	2		Luxembourg	1	3	Samoa	3	
Algeria	1-2		Greece	1-2	5	Latvia	1	2	American Samoa	5	
Andorra	3		Grenada	3		Macedonia North	2		San Marino	1-2	5
Angola	4-5		Greenland	5		Madagascar	3		Senegal	2	
Anguilla	3		Georgia	2		Mayotte	6		Serbia, Republic of	1-2	
Antigua and Barbuda	3		Guam	4		Macau SAR China	3		Seychelles	3	
Saudi Arabia	2-4		Guernsey	3		Malawi	3		Sierra Leone	3	
Argentina	2-5		Guyana	3		Maldives	4		Singapore	2	
Armenia	2		French Guiana	3		Malaysia	2-3		Slovakia	1	3
Aruba	3		Guadeloupe	2		Mali	2		Slovenia	1	2
Australia	3-4		Guatemala	2		Malta	1		Somalia	6	
Austria	1	2	Guinea	2		Morocco	1-2		Somaliland, Republic of	6	
Azerbaijan	2		Guinea-Bissau	5		Martinique	2		Sri Lanka	2	
Bahamas	2		Equatorial Guinea	3		Mauritania	3		United States	1-4	
Bahrain	2		Haiti	3		Mauritius	3		Sudan	3	
Bangladesh	3		Spain	1	5-7	Mexico	2-4		South Sudan	4	
Barbados	2		Netherlands	1	2	Micronesia	6		Suriname	3-4	
Belgium	1	3	Honduras	2		Moldova, Republic of	2		Syrian Arab Republic	7-8	
Belize	3		Hong Kong SAR China	2		Monaco	1		Switzerland	1	3-4
Benin	2		India	2-8		Mongolia	3		Sweden	1	3-4
Bermuda	2		Indonesia	2-4		Montserrat	3		French Polynesia	8	
Bhutan	5		Iraq	5-7		Mozambique	3-7		Thailand	2-4	
Belarus	2		Iran (Islamic Republic of)	4		Namibia	3-4		Taiwan	2	
Myanmar (Birma)	7		Ireland	1	3-4	Nauru	5		Tanzania, United Republic of	2-3	
Bolivia	3		Iceland	1		Nepal	3		Timor-Leste, D.R. of	4	
Bonaire	3		Israel	2-8		Nevis	3		Togo	2	
Bosnia & Herzegovina	1-2		Jamaica	2-3		Germany	1	2	Tonga	5	
Botswana	3		Japan	2-3		Niger	3		Trinidad and Tobago	3	
Brazil	2-4		Yemen	4-5		Nigeria	2-3		Tunisia	2	
Brunei Darussalam	3		Jersey	3		Nicaragua	2		Turkey	1-3	
Bulgaria	1	3	Jordan	2-4		Niue	5		Turkmenistan	7	
Burkina Faso	3		Cayman Islands	2		Norway	1-2	3-8	Turks and Caicos Islands	3	
Burundi	3		Cambodia	2		New Caledonia	5		Tuvalu	10	
Chile	2-3		Cameroon	2-3		New Zealand	3-4		Uganda	2	
China	2-5		Canada	2-3		Oman	2-3		Ukraine	1-2	
Croatia	1	3-4	Qatar	2		Pakistan	2-3		Uruguay	2	
Curacao	3		Kazakhstan	2-3		Palau	5		Uzbekistan	3	
Cyprus	2		Kenya	2		Panama	2		Vanuatu	5	
Chad	6		Kyrgyzstan	4		Papua New Guinea	3-4		Venezuela	3-4	
Republic of Montenegro	2		Kiribati	10-13		Paraguay	2		Hungary	1	3
Czech Republic	1	2	Colombia	2-3		Peru	2-3		United Kingdom	1	3-4
Denmark	1	3	Comoros	5		Puerto Rico	2-3		Vietnam	2	
Dominica	3		Congo	2		Portugal	1	3-4	Italy	1-2	3-4
Dominican Republic	3-4		Congo, The Dem Republic of	2-3		South Africa	2-3		Cote d'Ivoire	2	
Djibouti	3		Korea, Republic of	2		Central African Republic	5		Saint Helena	7	
Egypt	2		Korea, Democratic People's Republic	8		Cape Verde	6		Cook Islands	4	
Ecuador	2-3		Kosovo	2		Reunion	4		Virgin Islands (British)	3	
Eritrea	4		Costa Rica	2		Romania	1	3	Virgin Islands (U.S.)	3-4	
Estonia	1	3	Cuba	4		Rwanda	3		Canary Islands, The	2-3	
Ethiopia	2		Kuwait	2		St. Barthelemy	3		Marshall Islands	6	
Eswatini	2		Lao People's Democratic Republic	4		Saint Eustatius	3		Faroe Islands	2	
Falkland Islands (Malvinas)	6		Lesotho	3		Saint Kitts and Nevis	3		Solomon Islands	5	
Fiji	4		Lebanon			Saint Lucia	3		Sao Tome & Principe	3	
Philippines	2-5		Liberia	2		St. Maarten	3		Zambia	3-5	
Finland	1-2	5-7	Libya	3		Saint Vincent and The Grenadines	3		Zimbabwe	3-6	
France	1	3-4	Liechtenstein	7		Northern Mariana Islands	4		United Arab Emirates	2	
Gabon	2										
Gambia	3										

<sup>1</sup>For transit times and the availability of DHL Express 12:00 and DHL Express 9:00 for your origin and destination address please refer to the DHL Capability Tool at [dct.dhl.com](https://dct.dhl.com). Do you have any questions? Please contact us at [dhl.com.pl/exp-en/contact\\_center/contact\\_express.html](https://dhl.com.pl/exp-en/contact_center/contact_express.html).

# ZONES AND RATES



The International  
Specialists

Services

How to Ship  
with DHL Express

Shipping  
Tools

Zones and  
Rates

Simple  
Rules

Shipment  
Price

Optional  
Services

Surcharges

Customs  
Services

Service Capability  
and Rating Zones

Export  
Services

Import  
Services

## DHL EXPRESS WORLDWIDE IMPORT 3RD COUNTRY

### Origin and Destination Countries Zoning Table

Country/territory	Zone	Country/territory	Zone	Country/territory	Zone	Country/territory	Zone
Afghanistan	ROW	Dominican Republic	AM2	Libya	ROW	Senegal	ROW
Albania	EU3	Ecuador	AM3	Liechtenstein	EU3	Serbia, Republic of	EU3
Algeria	ROW	Egypt	ROW	Lithuania	EU2	Seychelles	ROW
American Samoa	AM2	El Salvador	AM2	Luxembourg	EU1	Sierra Leone	ROW
Andorra	EU2	Eritrea	ROW	Macau SAR China	AP1	Singapore	AP1
Angola	ROW	Estonia	EU2	Madagascar	ROW	Slovakia	EU2
Anguilla	AM2	Ethiopia	ROW	Malawi	ROW	Slovenia	EU2
Antigua	AM2	Falkland Islands	ROW	Malaysia	AP1	Solomon Islands	ROW
Argentina	AM3	Faroe Islands	EU2	Maldives	ROW	Somalia	ROW
Armenia	ROW	Fiji	ROW	Mali	ROW	Somaliland, Rep of (North Somalia)	ROW
Aruba	AM2	Finland	EU2	Malta	EU2	South Africa	MA1
Australia	AP2	France	EU1	Marshall Islands	AM2	South Sudan	ROW
Austria	EU1	French Guyana	AM3	Martinique	AM2	Spain	EU1
Azerbaijan	ROW	Gabon	ROW	Mauritania	ROW	Sri Lanka	AP2
Bahamas	AM2	Gambia	ROW	Mauritius	ROW	St Helena	ROW
Bahrain	MA1	Georgia	ROW	Mayotte	ROW	St. Barthelemy	AM2
Bangladesh	AP2	Germany	EU1	Mexico	AM1	St. Eustatius	AM2
Barbados	AM2	Ghana	ROW	Micronesia, Federated States Of	ROW	St. Kitts	AM2
Belarus	ROW	Gibraltar	EU3	Moldova, Republic Of	ROW	St. Lucia	AM2
Belgium	EU1	Greece	EU2	Monaco	EU1	St. Maarten	AM2
Belize	AM2	Greenland	EU2	Mongolia	ROW	St. Vincent	AM2
Benin	ROW	Grenada	AM2	Montenegro, Republic of	EU3	Sudan	ROW
Bermuda	AM2	Guadeloupe	AM2	Montserrat	AM2	Suriname	AM3
Bhutan	ROW	Guam	AM2	Morocco	ROW	Swaziland	ROW
Bolivia	AM3	Guatemala	AM2	Mozambique	ROW	Sweden	EU2
Bonaire	AM2	Guernsey	EU3	Myanmar	ROW	Switzerland	EU3
Bosnia and Herzegovina	EU3	Guinea Republic	ROW	Namibia	ROW	Syria	ROW
Botswana	ROW	Guinea-Bissau	ROW	Nauru, Republic Of	ROW	Tahiti	ROW
Brazil	AM3	Guinea-Equatorial	ROW	Nepal	ROW	Taiwan	AP1
Brunei	ROW	Guyana (British)	AM3	Netherlands, The	EU1	Tanzania	ROW
Bulgaria	EU2	Haiti	AM2	Nevis	AM2	Thailand	AP1
Burkina Faso	ROW	Honduras	AM2	New Caledonia	ROW	Timor-Leste	ROW
Burundi	ROW	Hong Kong SAR China	AP1	New Zealand	AP2	Togo	ROW
Cambodia	ROW	Hungary	EU2	Nicaragua	AM2	Tonga	ROW
Cameroon	ROW	Iceland	EU2	Niger	ROW	Trinidad and Tobago	AM2
Canada	AM1	India	AP2	Nigeria	ROW	Tunisia	ROW
Canary Islands, The	EU3	Indonesia	AP2	Niue	ROW	Turkey	EU3
Cape Verde	ROW	Iran (Islamic Republic of)	ROW	North Macedonia	EU3	Turkmenistan NEW	ROW
Cayman Islands	AM2	Iraq	ROW	Norway	EU3	Turks and Caicos Islands	AM2
Central African Republic	ROW	Ireland, Republic Of	EU1	Oman	MA1	Tuvalu	ROW
Chad	ROW	Israel	EU3	Pakistan	ROW	Uganda	ROW
Chile	AM3	Italy	EU1	Palau	AM2	Ukraine	ROW
China, People's Republic	AP1	Jamaica	AM2	Panama	AM2	United Arab Emirates	MA1
Colombia	AM3	Japan	AP1	Papua New Guinea	ROW	United Kingdom	EU1
Commonwealth of the Northern Mariana's Islands	AM2	Jersey	EU3	Paraguay	AM3	United States Of America	AM1
Comoros	ROW	Jordan	ROW	Peru	AM3	Uruguay	AM3
Congo	ROW	Kazakhstan	ROW	Philippines, The	AP2	Uzbekistan	ROW
Congo, The Democratic Republic of	ROW	Kenya	ROW	Poland	EU2	Vanuatu	ROW
Cook Islands	ROW	Kiribati	ROW	Portugal	EU1	Vatican City	EU1
Costa Rica	AM2	Korea, Republic of (South K.)	AP1	Puerto Rico	AM2	Venezuela	AM3
Cote d'Ivoire	ROW	Korea, the D.P.R OF (North K.)	ROW	Qatar	MA1	Vietnam	AP2
Croatia	EU2	Kosovo	ROW	Reunion, Island Of	ROW	Virgin Islands (British)	AM2
Cuba	AM2	Kuwait	MA1	Romania	EU2	Virgin Islands (US)	AM2
Curacao	AM2	Kyrgyzstan	ROW	Russian Federation, The	ROW	Yemen, Republic of	ROW
Cyprus	EU2	Lao People's Democratic Republic	ROW	Rwanda	ROW	Zambia	ROW
Czech Republic, The	EU2	Latvia	EU2	Samoa	ROW	Zimbabwe	ROW
Denmark	EU2	Lebanon	ROW	San Marino	EU1		
Djibouti	ROW	Lesotho	ROW	Sao Tome and Principe	ROW		
Dominica	AM2	Liberia	ROW	Saudi Arabia	MA1		

# ZONES AND RATES



The International Specialists

Services

How to Ship with DHL Express

Shipping Tools

Zones and Rates

Simple Rules

Shipment Price

Optional Services

Surcharges

Customs Services

Service Capability and Rating Zones

Export Services

Import Services

## DHL EXPRESS WORLDWIDE IMPORT 3RD COUNTRY

Destination zone Origin zone	EU1	EU2	EU3	AP1	AP2	AM1	AM2	AM3	MA1	ROW
EU1	1	2	3	4	5	4	5	6	4	6
EU2	2	2	3	5	5	5	6	6	4	6
EU3	3	3	3	5	6	6	6	6	5	7
AP1	5	6	6	3	4	4	7	7	6	8
AP2	6	6	7	3	4	7	8	8	6	8
AM1	4	5	6	3	6	3	5	5	7	8
AM2	5	6	7	6	8	4	5	6	7	8
AM3	5	6	6	6	8	5	5	5	7	8
MA1	5	5	5	5	5	7	7	7	4	7
ROW	5	5	7	7	7	7	8	8	7	8



# ZONES AND RATES



The International Specialists	Services	How to Ship with DHL Express	Shipping Tools	Zones and Rates	Simple Rules			
Shipment Price	Optional Services	Surcharges	Customs Services	Service Capability and Rating Zones	Export Services	Import Services		
<b>Export</b>								
<b>DHL EXPRESS WORLDWIDE</b>								
Weight in kg	Zone 1	Zone 2	Zone 3	Zone 4	Zone 5	Zone 6	Zone 7	Zone 8
Non-dutiable documents up to 2kg								
0.5	326	354	378	380	381	414	428	479
1	402	436	461	462	463	517	537	599
1.5	472	514	543	544	545	615	640	711
2	542	592	625	626	627	713	743	823
Non-dutiable documents over 2kg and dutiable packages								
0.5	326	354	378	474	477	525	534	592
1	402	436	461	557	568	628	645	712
1.5	472	514	543	636	650	727	748	825
2	542	592	625	715	732	826	851	938
2.5	610	667	708	794	811	921	953	1,049
3	671	743	787	870	887	1,007	1,047	1,153
3.5	732	819	866	946	963	1,093	1,141	1,257
4	793	895	945	1,022	1,039	1,179	1,235	1,361
4.5	854	971	1,024	1,098	1,115	1,265	1,329	1,465
5	915	1,047	1,103	1,174	1,191	1,351	1,423	1,569
5.5	955	1,096	1,156	1,221	1,237	1,414	1,485	1,638
6	995	1,145	1,209	1,268	1,283	1,477	1,547	1,707
6.5	1,035	1,194	1,262	1,315	1,329	1,540	1,609	1,776
7	1,075	1,243	1,315	1,362	1,375	1,603	1,671	1,845
7.5	1,115	1,292	1,368	1,409	1,421	1,666	1,733	1,914
8	1,155	1,341	1,421	1,456	1,467	1,729	1,795	1,983
8.5	1,195	1,390	1,474	1,503	1,513	1,792	1,857	2,052
9	1,235	1,439	1,527	1,550	1,559	1,855	1,919	2,121
9.5	1,275	1,488	1,580	1,597	1,605	1,918	1,981	2,190
10	1,315	1,537	1,633	1,644	1,651	1,981	2,043	2,259
11	1,339	1,563	1,671	1,688	1,701	2,049	2,127	2,345
12	1,363	1,589	1,709	1,732	1,751	2,117	2,211	2,431
13	1,387	1,615	1,747	1,776	1,801	2,185	2,295	2,517
14	1,411	1,641	1,785	1,820	1,851	2,253	2,379	2,603
15	1,435	1,667	1,823	1,864	1,901	2,321	2,463	2,689

Table continues overleaf

# ZONES AND RATES



The International Specialists	Services	How to Ship with DHL Express	Shipping Tools	Zones and Rates	Simple Rules			
Shipment Price	Optional Services	Surcharges	Customs Services	Service Capability and Rating Zones	Export Services	Import Services		
<b>Export</b>								
<b>DHL EXPRESS WORLDWIDE</b>								
Weight in kg	Zone 1	Zone 2	Zone 3	Zone 4	Zone 5	Zone 6	Zone 7	Zone 8
16	1,459	1,693	1,861	1,908	1,951	2,389	2,547	2,775
17	1,483	1,719	1,899	1,952	2,001	2,457	2,631	2,861
18	1,507	1,745	1,937	1,996	2,051	2,525	2,715	2,947
19	1,531	1,771	1,975	2,040	2,101	2,593	2,799	3,033
20	1,555	1,797	2,013	2,084	2,151	2,661	2,883	3,119
21	1,589	1,847	2,073	2,138	2,211	2,729	2,961	3,207
22	1,623	1,897	2,133	2,192	2,271	2,797	3,039	3,295
23	1,657	1,947	2,193	2,246	2,331	2,865	3,117	3,383
24	1,691	1,997	2,253	2,300	2,391	2,933	3,195	3,471
25	1,725	2,047	2,313	2,354	2,451	3,001	3,273	3,559
26	1,759	2,097	2,373	2,408	2,511	3,069	3,351	3,647
27	1,793	2,147	2,433	2,462	2,571	3,137	3,429	3,735
28	1,827	2,197	2,493	2,516	2,631	3,205	3,507	3,823
29	1,861	2,247	2,553	2,570	2,691	3,273	3,585	3,911
30	1,895	2,297	2,613	2,624	2,751	3,341	3,663	3,999
40	2,135	2,727	3,143	3,154	3,281	3,911	4,393	4,859
50	2,375	3,157	3,673	3,684	3,811	4,481	5,123	5,719
60	2,615	3,587	4,203	4,214	4,341	5,051	5,853	6,579
70	2,855	4,017	4,733	4,744	4,871	5,621	6,583	7,439
For each additional 0.5kg								
Above 10kg	12	13	19	22	25	34	42	43
Above 20kg	17	25	30	27	30	34	39	44
For each additional 1kg								
Above 30kg	24	43	53	53	53	57	73	86
Above 70kg	40	56	71	72	72	81	86	112
Above 300kg	54	73	94	94	94	106	111	146

- Additional charges, such as fuel fees, cost of additional services or customs services should be added to net price. All prices are in PLN and will be increased by adding any appropriate taxes on goods and services.
- For more information on our services please check [dhl.com.pl/en/express.html](https://dhl.com.pl/en/express.html). Should you have any questions, please contact us at [dhl.com.pl/exp-en/contact\\_center/contact\\_express.html](https://dhl.com.pl/exp-en/contact_center/contact_express.html).
- DHL Express does not accept shipments exceeding 1,000kg, or containing pieces exceeding 300kg or 300cm in length, and/or not meeting DHL standards for packing. Refer to our Packing Guide on [dhl.com.pl/exp-en/express/shipping/shipping\\_advice/packaging\\_advice.html](https://dhl.com.pl/exp-en/express/shipping/shipping_advice/packaging_advice.html). These network restrictions are subject to change with 30 days' notice.
- In the event any country leaves the European Union, DHL reserves the right to change rates or zones with 30 days' notice.

# ZONES AND RATES



The International Specialists	Services	How to Ship with DHL Express	Shipping Tools	Zones and Rates	Simple Rules			
Shipment Price	Optional Services	Surcharges	Customs Services	Service Capability and Rating Zones	Export Services	Import Services		
<b>Export</b>								
<b>DHL MEDICAL EXPRESS</b>								
Weight in kg	Zone 1	Zone 2	Zone 3	Zone 4	Zone 5	Zone 6	Zone 7	Zone 8
0.5	403	439	468	595	615	651	664	735
1	495	536	568	695	726	773	795	879
1.5	577	630	668	792	826	890	917	1,013
2	659	724	768	889	926	1,007	1,039	1,147
2.5	739	812	865	985	1,026	1,119	1,161	1,279
3	812	900	962	1,077	1,120	1,222	1,272	1,403
3.5	885	988	1,059	1,169	1,214	1,325	1,383	1,527
4	958	1,076	1,156	1,261	1,308	1,428	1,494	1,651
4.5	1,031	1,164	1,253	1,353	1,402	1,531	1,605	1,775
5	1,104	1,252	1,350	1,445	1,496	1,634	1,716	1,899
5.5	1,147	1,309	1,411	1,500	1,551	1,707	1,789	1,978
6	1,190	1,366	1,472	1,555	1,606	1,780	1,862	2,057
6.5	1,233	1,423	1,533	1,610	1,661	1,853	1,935	2,136
7	1,276	1,480	1,594	1,665	1,716	1,926	2,008	2,215
7.5	1,319	1,537	1,655	1,720	1,771	1,999	2,081	2,294
8	1,362	1,594	1,716	1,775	1,826	2,072	2,154	2,373
8.5	1,405	1,651	1,777	1,830	1,881	2,145	2,227	2,452
9	1,448	1,708	1,838	1,885	1,936	2,218	2,300	2,531
9.5	1,491	1,765	1,899	1,940	1,991	2,291	2,373	2,610
10	1,534	1,822	1,960	1,995	2,046	2,364	2,446	2,689
11	1,562	1,854	2,006	2,049	2,104	2,440	2,544	2,793
12	1,590	1,886	2,052	2,103	2,162	2,516	2,642	2,897
13	1,618	1,918	2,098	2,157	2,220	2,592	2,740	3,001
14	1,646	1,950	2,144	2,211	2,278	2,668	2,838	3,105
15	1,674	1,982	2,190	2,265	2,336	2,744	2,936	3,209
16	1,702	2,014	2,236	2,319	2,394	2,820	3,034	3,313
17	1,730	2,046	2,282	2,373	2,452	2,896	3,132	3,417
18	1,758	2,078	2,328	2,427	2,510	2,972	3,230	3,521
19	1,786	2,110	2,374	2,481	2,568	3,048	3,328	3,625
20	1,814	2,142	2,420	2,535	2,626	3,124	3,426	3,729
21	1,846	2,198	2,486	2,591	2,696	3,198	3,512	3,821

Table continues overleaf

# ZONES AND RATES



The International Specialists	Services	How to Ship with DHL Express	Shipping Tools	Zones and Rates	Simple Rules			
Shipment Price	Optional Services	Surcharges	Customs Services	Service Capability and Rating Zones	Export Services	Import Services		
<b>Export</b>								
<b>DHL MEDICAL EXPRESS</b>								
Weight in kg	Zone 1	Zone 2	Zone 3	Zone 4	Zone 5	Zone 6	Zone 7	Zone 8
22	1,878	2,254	2,552	2,647	2,766	3,272	3,598	3,913
23	1,910	2,310	2,618	2,703	2,836	3,346	3,684	4,005
24	1,942	2,366	2,684	2,759	2,906	3,420	3,770	4,097
25	1,974	2,422	2,750	2,815	2,976	3,494	3,856	4,189
26	2,006	2,478	2,816	2,871	3,046	3,568	3,942	4,281
27	2,038	2,534	2,882	2,927	3,116	3,642	4,028	4,373
28	2,070	2,590	2,948	2,983	3,186	3,716	4,114	4,465
29	2,102	2,646	3,014	3,039	3,256	3,790	4,200	4,557
30	2,134	2,702	3,080	3,095	3,326	3,864	4,286	4,649
40	2,434	3,182	3,650	3,705	3,916	4,484	5,076	5,609
50	2,734	3,662	4,220	4,315	4,506	5,104	5,866	6,569
60	3,034	4,142	4,790	4,925	5,096	5,724	6,656	7,529
70	3,334	4,622	5,360	5,535	5,686	6,344	7,446	8,489
For each additional 0.5kg								
Above 10kg	14	16	23	27	29	38	49	52
Above 20kg	16	28	33	28	35	37	43	46
For each additional 1kg								
Above 30kg	30	48	57	61	59	62	79	96
Above 70kg	39	54	74	74	74	79	89	111
Above 300kg	43	61	85	85	86	92	102	128

- Additional charges, such as fuel fees, cost of additional services or customs services should be added to net price. All prices are in PLN and will be increased by adding any appropriate taxes on goods and services.
- For more information on our services please check [dhl.com.pl/en/express.html](https://dhl.com.pl/en/express.html). Should you have any questions, please contact us at [dhl.com.pl/exp-en/contact\\_center/contact\\_express.html](https://dhl.com.pl/exp-en/contact_center/contact_express.html).
- DHL Express does not accept shipments exceeding 1,000kg, or containing pieces exceeding 300kg or 300cm in length, and/or not meeting DHL standards for packing. Refer to our Packing Guide on [dhl.com.pl/exp-en/express/shipping/shipping\\_advice/packaging\\_advice.html](https://dhl.com.pl/exp-en/express/shipping/shipping_advice/packaging_advice.html). These network restrictions are subject to change with 30 days' notice.
- In the event any country leaves the European Union, DHL reserves the right to change rates or zones with 30 days' notice.



# ZONES AND RATES



The International Specialists	Services	How to Ship with DHL Express	Shipping Tools	Zones and Rates	Simple Rules	
Shipment Price	Optional Services	Surcharges	Customs Services	Service Capability and Rating Zones	Export Services	Import Services

## Export

### DHL EXPRESS ENVELOPE

Weight in kg	Zone 1	Zone 2	Zone 3	Zone 4	Zone 5	Zone 6	Zone 7	Zone 8
Express Envelope up 0,3kg								
0,3	275	301	319	320	321	351	364	407

Additional charges, such as fuel fees, cost of additional services or customs services should be added to net price. All prices are in PLN and will be increased by adding any appropriate taxes on goods and services.

In the event any country leaves the European Union, DHL reserves the right to change rates or zones with 30 days' notice. For more information on our services please check [dhl.com.pl/en/express.html](http://dhl.com.pl/en/express.html). Should you have any questions, please contact us at [dhl.com.pl/exp-en/contact\\_center/contact\\_express.html](http://dhl.com.pl/exp-en/contact_center/contact_express.html).

### DHL ECONOMY SELECT

Weight in kg	Zone 1	Zone 2	Zone 3	Zone 4	Weight in kg	Zone 1	Zone 2	Zone 3	Zone 4
1	254	273	292	303	17	490	529	586	601
2	315	338	361	376	18	492	531	592	604
3	352	377	402	419	19	494	533	598	607
4	389	416	443	462	20	496	535	604	610
5	426	455	484	505	21	502	540	607	615
6	436	467	496	520	22	508	545	610	620
7	446	479	508	535	23	514	550	613	625
8	456	491	520	550	24	520	555	616	630
9	466	503	532	565	25	526	560	619	635
10	476	515	544	580	26	532	565	622	640
11	478	517	550	583	27	538	570	625	645
12	480	519	556	586	28	544	575	628	650
13	482	521	562	589	29	550	580	631	655
14	484	523	568	592	30	556	585	634	660
15	486	525	574	595	31	563	593	648	674
16	488	527	580	598	32	570	601	662	688

Table continues overleaf

# ZONES AND RATES



The International Specialists		Services		How to Ship with DHL Express		Shipping Tools		Zones and Rates		Simple Rules			
Shipment Price		Optional Services		Surcharges		Customs Services		Service Capability and Rating Zones		Export Services			
<b>Export</b>													
<b>DHL ECONOMY SELECT</b>													
Weight in kg	Zone 1	Zone 2	Zone 3	Zone 4	Weight in kg	Zone 1	Zone 2	Zone 3	Zone 4				
33	577	609	676	702	60	766	825	1,054	1,080				
34	584	617	690	716	61	773	833	1,068	1,094				
35	591	625	704	730	62	780	841	1,082	1,108				
36	598	633	718	744	63	787	849	1,096	1,122				
37	605	641	732	758	64	794	857	1,110	1,136				
38	612	649	746	772	65	801	865	1,124	1,150				
39	619	657	760	786	66	808	873	1,138	1,164				
40	626	665	774	800	67	815	881	1,152	1,178				
41	633	673	788	814	68	822	889	1,166	1,192				
42	640	681	802	828	69	829	897	1,180	1,206				
43	647	689	816	842	70	836	905	1,194	1,220				
44	654	697	830	856	80	928	1,001	1,316	1,352				
45	661	705	844	870	90	1,020	1,097	1,438	1,484				
46	668	713	858	884	100	1,112	1,193	1,560	1,616				
47	675	721	872	898	125	1,342	1,433	1,865	1,946				
48	682	729	886	912	150	1,572	1,673	2,170	2,276				
49	689	737	900	926	175	1,802	1,913	2,475	2,606				
50	696	745	914	940	200	2,032	2,153	2,780	2,936				
51	703	753	928	954	225	2,262	2,393	3,085	3,266				
52	710	761	942	968	250	2,492	2,633	3,390	3,596				
53	717	769	956	982	275	2,722	2,873	3,695	3,926				
54	724	777	970	996	300	2,952	3,113	4,000	4,256				
55	731	785	984	1,010	For each additional 5kg								
56	738	793	998	1,024	Above 70kg	46	48	61	66				
57	745	801	1,012	1,038	Above 300kg	49	56	73	72				
58	752	809	1,026	1,052									
59	759	817	1,040	1,066									

- Additional charges, such as fuel fees, cost of additional services or customs services should be added to net price. All prices are in PLN and will be increased by adding any appropriate taxes on goods and services.
- For more information on our services please check [dhl.com.pl/en/express.html](https://dhl.com.pl/en/express.html). Should you have any questions, please contact us at [dhl.com.pl/exp-en/contact\\_center/contact\\_express.html](https://dhl.com.pl/exp-en/contact_center/contact_express.html).
- DHL Express does not accept shipments exceeding 1,000kg, or containing pieces exceeding 300kg or 300cm in length, and/or not meeting DHL standards for packing. Refer to our Packing Guide on [dhl.com.pl/exp-en/express/shipping/shipping\\_advice/packaging\\_advice.html](https://dhl.com.pl/exp-en/express/shipping/shipping_advice/packaging_advice.html). These network restrictions are subject to change with 30 days' notice.
- In the event any country leaves the European Union, DHL reserves the right to change rates or zones with 30 days' notice.

# ZONES AND RATES



The International Specialists	Services	How to Ship with DHL Express	Shipping Tools	Zones and Rates	Simple Rules			
Shipment Price	Optional Services	Surcharges	Customs Services	Service Capability and Rating Zones	Export Services	Import Services		
<b>Import</b>								
<b>DHL EXPRESS WORLDWIDE IMPORT</b>								
Weight in kg	Zone 1	Zone 2	Zone 3	Zone 4	Zone 5	Zone 6	Zone 7	Zone 8
Non-dutiable documents up to 2kg								
0.5	396	430	458	497	506	537	555	593
1	488	527	560	579	604	641	666	712
1.5	568	618	660	671	696	740	772	829
2	648	709	760	763	788	839	878	946
Non-dutiable documents over 2kg and dutiable packages								
0.5	396	430	458	576	580	633	637	705
1	488	527	560	667	689	756	769	850
1.5	568	618	660	753	788	875	894	985
2	648	709	760	839	887	994	1,019	1,120
2.5	730	796	859	925	989	1,110	1,142	1,255
3	805	879	941	1,007	1,078	1,214	1,252	1,384
3.5	880	962	1,023	1,089	1,167	1,318	1,362	1,513
4	955	1,045	1,105	1,171	1,256	1,422	1,472	1,642
4.5	1,030	1,128	1,187	1,253	1,345	1,526	1,582	1,771
5	1,105	1,211	1,269	1,335	1,434	1,630	1,692	1,900
5.5	1,149	1,263	1,327	1,388	1,488	1,689	1,752	1,978
6	1,193	1,315	1,385	1,441	1,542	1,748	1,812	2,056
6.5	1,237	1,367	1,443	1,494	1,596	1,807	1,872	2,134
7	1,281	1,419	1,501	1,547	1,650	1,866	1,932	2,212
7.5	1,325	1,471	1,559	1,600	1,704	1,925	1,992	2,290
8	1,369	1,523	1,617	1,653	1,758	1,984	2,052	2,368
8.5	1,413	1,575	1,675	1,706	1,812	2,043	2,112	2,446
9	1,457	1,627	1,733	1,759	1,866	2,102	2,172	2,524
9.5	1,501	1,679	1,791	1,812	1,920	2,161	2,232	2,602
10	1,545	1,731	1,849	1,865	1,974	2,220	2,292	2,680
11	1,575	1,765	1,891	1,915	2,018	2,294	2,388	2,766
12	1,605	1,799	1,933	1,965	2,062	2,368	2,484	2,852
13	1,635	1,833	1,975	2,015	2,106	2,442	2,580	2,938
14	1,665	1,867	2,017	2,065	2,150	2,516	2,676	3,024
15	1,695	1,901	2,059	2,115	2,194	2,590	2,772	3,110

Table continues overleaf

# ZONES AND RATES



The International Specialists	Services	How to Ship with DHL Express	Shipping Tools	Zones and Rates	Simple Rules	
Shipment Price	Optional Services	Surcharges	Customs Services	Service Capability and Rating Zones	Export Services	Import Services

## Import

### DHL EXPRESS WORLDWIDE IMPORT

Weight in kg	Zone 1	Zone 2	Zone 3	Zone 4	Zone 5	Zone 6	Zone 7	Zone 8
16	1,725	1,935	2,101	2,165	2,238	2,664	2,868	3,196
17	1,755	1,969	2,143	2,215	2,282	2,738	2,964	3,282
18	1,785	2,003	2,185	2,265	2,326	2,812	3,060	3,368
19	1,815	2,037	2,227	2,315	2,370	2,886	3,156	3,454
20	1,845	2,071	2,269	2,365	2,414	2,960	3,252	3,540
21	1,905	2,121	2,335	2,423	2,478	3,034	3,334	3,632
22	1,965	2,171	2,401	2,481	2,542	3,108	3,416	3,724
23	2,025	2,221	2,467	2,539	2,606	3,182	3,498	3,816
24	2,085	2,271	2,533	2,597	2,670	3,256	3,580	3,908
25	2,145	2,321	2,599	2,655	2,734	3,330	3,662	4,000
26	2,205	2,371	2,665	2,713	2,798	3,404	3,744	4,092
27	2,265	2,421	2,731	2,771	2,862	3,478	3,826	4,184
28	2,325	2,471	2,797	2,829	2,926	3,552	3,908	4,276
29	2,385	2,521	2,863	2,887	2,990	3,626	3,990	4,368
30	2,445	2,571	2,929	2,945	3,054	3,700	4,072	4,460
40	2,755	3,081	3,539	3,555	3,644	4,330	4,902	5,430
50	3,065	3,591	4,149	4,165	4,234	4,960	5,732	6,400
60	3,375	4,101	4,759	4,775	4,824	5,590	6,562	7,370
70	3,685	4,611	5,369	5,385	5,414	6,220	7,392	8,340
For each additional 0.5kg								
Above 10kg	15	17	21	25	22	37	48	43
Above 20kg	30	25	33	29	32	37	41	46
For each additional 1kg								
Above 30kg	31	51	61	61	59	63	83	97
Above 70kg	43	57	73	74	74	83	93	116
Above 300kg	52	72	93	93	93	105	108	144

- Additional charges, such as fuel fees, cost of additional services or customs services should be added to net price. All prices are in PLN and will be increased by adding any appropriate taxes on goods and services.
- For more information on our services please check [dhl.com.pl/en/express.html](https://dhl.com.pl/en/express.html). Should you have any questions, please contact us at [dhl.com.pl/exp-en/contact\\_center/contact\\_express.html](https://dhl.com.pl/exp-en/contact_center/contact_express.html).
- DHL Express does not accept shipments exceeding 1,000kg, or containing pieces exceeding 300kg or 300cm in length, and/or not meeting DHL standards for packing. Refer to our Packing Guide on [dhl.com.pl/exp-en/express/shipping/shipping\\_advice/packaging\\_advice.html](https://dhl.com.pl/exp-en/express/shipping/shipping_advice/packaging_advice.html). These network restrictions are subject to change with 30 days' notice.
- In the event any country leaves the European Union, DHL reserves the right to change rates or zones with 30 days' notice.

# ZONES AND RATES



The International Specialists	Services	How to Ship with DHL Express	Shipping Tools	Zones and Rates	Simple Rules			
Shipment Price	Optional Services	Surcharges	Customs Services	Service Capability and Rating Zones	Export Services	Import Services		
<b>Import</b>								
<b>DHL EXPRESS WORLDWIDE IMPORT 3RD COUNTRY</b>								
Weight in kg	Zone 1	Zone 2	Zone 3	Zone 4	Zone 5	Zone 6	Zone 7	Zone 8
Non-dutiable documents up to 2kg								
0.5	415	498	540	582	623	665	749	832
1	581	697	756	815	873	931	1,049	1,165
1.5	706	846	922	989	1,064	1,130	1,273	1,415
2	831	995	1,088	1,163	1,255	1,329	1,497	1,665
Non-dutiable documents over 2kg and dutiable packages								
0.5	415	498	623	665	707	790	915	998
1	581	697	839	898	957	1,056	1,215	1,331
1.5	706	846	1,005	1,072	1,148	1,255	1,439	1,581
2	831	995	1,171	1,246	1,339	1,454	1,663	1,831
2.5	956	1,136	1,337	1,420	1,530	1,653	1,887	2,081
3	1,014	1,202	1,420	1,528	1,655	1,794	2,044	2,289
3.5	1,072	1,268	1,503	1,636	1,780	1,935	2,201	2,497
4	1,130	1,334	1,586	1,744	1,905	2,076	2,358	2,705
4.5	1,188	1,400	1,669	1,852	2,030	2,217	2,515	2,913
5	1,246	1,466	1,752	1,960	2,155	2,358	2,672	3,121
5.5	1,296	1,524	1,826	2,060	2,271	2,490	2,821	3,320
6	1,346	1,582	1,900	2,160	2,387	2,622	2,970	3,519
6.5	1,396	1,640	1,974	2,260	2,503	2,754	3,119	3,718
7	1,446	1,698	2,048	2,360	2,619	2,886	3,268	3,917
7.5	1,496	1,756	2,122	2,460	2,735	3,018	3,417	4,116
8	1,546	1,814	2,196	2,560	2,851	3,150	3,566	4,315
8.5	1,596	1,872	2,270	2,660	2,967	3,282	3,715	4,514
9	1,646	1,930	2,344	2,760	3,083	3,414	3,864	4,713
9.5	1,696	1,988	2,418	2,860	3,199	3,546	4,013	4,912
10	1,746	2,046	2,492	2,960	3,315	3,678	4,162	5,111
11	1,846	2,162	2,640	3,142	3,531	3,942	4,460	5,477
12	1,946	2,278	2,788	3,324	3,747	4,206	4,758	5,843
13	2,046	2,394	2,936	3,506	3,963	4,470	5,056	6,209
14	2,146	2,510	3,084	3,688	4,179	4,734	5,354	6,575
15	2,246	2,626	3,232	3,870	4,395	4,998	5,652	6,941

Table continues overleaf

# ZONES AND RATES



The International Specialists	Services	How to Ship with DHL Express	Shipping Tools	Zones and Rates	Simple Rules	
Shipment Price	Optional Services	Surcharges	Customs Services	Service Capability and Rating Zones	Export Services	Import Services

## Import

### DHL EXPRESS WORLDWIDE IMPORT 3RD COUNTRY

Weight in kg	Zone 1	Zone 2	Zone 3	Zone 4	Zone 5	Zone 6	Zone 7	Zone 8
16	2,346	2,742	3,380	4,052	4,611	5,262	5,950	7,307
17	2,446	2,858	3,528	4,234	4,827	5,526	6,248	7,673
18	2,546	2,974	3,676	4,416	5,043	5,790	6,546	8,039
19	2,646	3,090	3,824	4,598	5,259	6,054	6,844	8,405
20	2,746	3,206	3,972	4,780	5,475	6,318	7,142	8,771
21	2,846	3,322	4,120	4,962	5,691	6,582	7,440	9,137
22	2,946	3,438	4,268	5,144	5,907	6,846	7,738	9,503
23	3,046	3,554	4,416	5,326	6,123	7,110	8,036	9,869
24	3,146	3,670	4,564	5,508	6,339	7,374	8,334	10,235
25	3,246	3,786	4,712	5,690	6,555	7,638	8,632	10,601
26	3,346	3,902	4,860	5,872	6,771	7,902	8,930	10,967
27	3,446	4,018	5,008	6,054	6,987	8,166	9,228	11,333
28	3,546	4,134	5,156	6,236	7,203	8,430	9,526	11,699
29	3,646	4,250	5,304	6,418	7,419	8,694	9,824	12,065
30	3,746	4,366	5,452	6,600	7,635	8,958	10,122	12,431
40	4,576	5,366	6,702	8,340	9,625	11,458	12,952	15,761
50	5,406	6,366	7,952	10,080	11,615	13,958	15,782	19,091
60	6,236	7,366	9,202	11,820	13,605	16,458	18,612	22,421
70	7,066	8,366	10,452	13,560	15,595	18,958	21,442	25,751
For each additional 0.5kg								
Above 10kg	50	58	74	91	108	132	149	183
Above 20kg	50	58	74	91	108	132	149	183
For each additional 1kg								
Above 30kg	83	100	125	174	199	250	283	333
Above 70kg	83	100	125	174	199	250	283	333
Above 300kg	95	115	145	192	230	287	325	384

- Additional charges, such as fuel fees, cost of additional services or customs services should be added to net price. All prices are in PLN and will be increased by adding any appropriate taxes on goods and services.
- For more information on our services please check [dhl.com.pl/en/express.html](https://dhl.com.pl/en/express.html). Should you have any questions, please contact us at [dhl.com.pl/exp-en/contact\\_center/contact\\_express.html](https://dhl.com.pl/exp-en/contact_center/contact_express.html).
- DHL Express does not accept shipments exceeding 1,000kg, or containing pieces exceeding 300kg or 300cm in length, and/or not meeting DHL standards for packing. Refer to our Packing Guide on [dhl.com.pl/exp-en/express/shipping/shipping\\_advice/packaging\\_advice.html](https://dhl.com.pl/exp-en/express/shipping/shipping_advice/packaging_advice.html). These network restrictions are subject to change with 30 days' notice.
- In the event any country leaves the European Union, DHL reserves the right to change rates or zones with 30 days' notice.

# ZONES AND RATES



The International Specialists	Services	How to Ship with DHL Express	Shipping Tools	Zones and Rates	Simple Rules			
Shipment Price	Optional Services	Surcharges	Customs Services	Service Capability and Rating Zones	Export Services	Import Services		
<b>Import</b>								
<b>DHL IMPORT MEDICAL EXPRESS</b>								
Weight in kg	Zone 1	Zone 2	Zone 3	Zone 4	Zone 5	Zone 6	Zone 7	Zone 8
0.5	500	546	581	737	765	808	823	912
1	612	661	705	848	903	959	985	1,090
1.5	713	771	827	954	1,027	1,104	1,136	1,255
2	814	881	949	1,060	1,151	1,249	1,287	1,420
2.5	914	987	1,067	1,166	1,277	1,389	1,434	1,584
3	1,006	1,089	1,169	1,271	1,390	1,515	1,568	1,739
3.5	1,098	1,191	1,271	1,376	1,503	1,641	1,702	1,894
4	1,190	1,293	1,373	1,481	1,616	1,767	1,836	2,049
4.5	1,282	1,395	1,475	1,586	1,729	1,893	1,970	2,204
5	1,374	1,497	1,577	1,691	1,842	2,019	2,104	2,359
5.5	1,429	1,559	1,646	1,752	1,907	2,089	2,173	2,453
6	1,484	1,621	1,715	1,813	1,972	2,159	2,242	2,547
6.5	1,539	1,683	1,784	1,874	2,037	2,229	2,311	2,641
7	1,594	1,745	1,853	1,935	2,102	2,299	2,380	2,735
7.5	1,649	1,807	1,922	1,996	2,167	2,369	2,449	2,829
8	1,704	1,869	1,991	2,057	2,232	2,439	2,518	2,923
8.5	1,759	1,931	2,060	2,118	2,297	2,509	2,587	3,017
9	1,814	1,993	2,129	2,179	2,362	2,579	2,656	3,111
9.5	1,869	2,055	2,198	2,240	2,427	2,649	2,725	3,205
10	1,924	2,117	2,267	2,301	2,492	2,719	2,794	3,299
11	1,962	2,155	2,317	2,365	2,542	2,803	2,906	3,391
12	2,000	2,193	2,367	2,429	2,592	2,887	3,018	3,483
13	2,038	2,231	2,417	2,493	2,642	2,971	3,130	3,575
14	2,076	2,269	2,467	2,557	2,692	3,055	3,242	3,667
15	2,114	2,307	2,517	2,621	2,742	3,139	3,354	3,759
16	2,152	2,345	2,567	2,685	2,792	3,223	3,466	3,851
17	2,190	2,383	2,617	2,749	2,842	3,307	3,578	3,943
18	2,228	2,421	2,667	2,813	2,892	3,391	3,690	4,035
19	2,266	2,459	2,717	2,877	2,942	3,475	3,802	4,127
20	2,304	2,497	2,767	2,941	2,992	3,559	3,914	4,219
21	2,368	2,561	2,841	3,011	3,072	3,639	4,018	4,339

Table continues overleaf

# ZONES AND RATES



The International Specialists	Services	How to Ship with DHL Express	Shipping Tools	Zones and Rates	Simple Rules			
Shipment Price	Optional Services	Surcharges	Customs Services	Service Capability and Rating Zones	Export Services	Import Services		
<b>Import</b>								
<b>DHL IMPORT MEDICAL EXPRESS</b>								
Weight in kg	Zone 1	Zone 2	Zone 3	Zone 4	Zone 5	Zone 6	Zone 7	Zone 8
22	2,432	2,625	2,915	3,081	3,152	3,719	4,122	4,459
23	2,496	2,689	2,989	3,151	3,232	3,799	4,226	4,579
24	2,560	2,753	3,063	3,221	3,312	3,879	4,330	4,699
25	2,624	2,817	3,137	3,291	3,392	3,959	4,434	4,819
26	2,688	2,881	3,211	3,361	3,472	4,039	4,538	4,939
27	2,752	2,945	3,285	3,431	3,552	4,119	4,642	5,059
28	2,816	3,009	3,359	3,501	3,632	4,199	4,746	5,179
29	2,880	3,073	3,433	3,571	3,712	4,279	4,850	5,299
30	2,944	3,137	3,507	3,641	3,792	4,359	4,954	5,419
40	3,354	3,707	4,187	4,351	4,492	5,079	5,864	6,509
50	3,764	4,277	4,867	5,061	5,192	5,799	6,774	7,599
60	4,174	4,847	5,547	5,771	5,892	6,519	7,684	8,689
70	4,584	5,417	6,227	6,481	6,592	7,239	8,594	9,779
For each additional 0.5kg								
Above 10kg	19	19	25	32	25	42	56	46
Above 20kg	32	32	37	35	40	40	52	60
For each additional 1kg								
Above 30kg	41	57	68	71	70	72	91	109
Above 70kg	49	60	81	81	83	92	103	129
Above 300kg	55	71	94	94	96	106	119	148

- Additional charges, such as fuel fees, cost of additional services or customs services should be added to net price. All prices are in PLN and will be increased by adding any appropriate taxes on goods and services.
- For more information on our services please check [dhl.com.pl/en/express.html](https://dhl.com.pl/en/express.html). Should you have any questions, please contact us at [dhl.com.pl/exp-en/contact\\_center/contact\\_express.html](https://dhl.com.pl/exp-en/contact_center/contact_express.html).
- DHL Express does not accept shipments exceeding 1,000kg, or containing pieces exceeding 300kg or 300cm in length, and/or not meeting DHL standards for packing. Refer to our Packing Guide on [dhl.com.pl/exp-en/express/shipping/shipping\\_advice/packaging\\_advice.html](https://dhl.com.pl/exp-en/express/shipping/shipping_advice/packaging_advice.html). These network restrictions are subject to change with 30 days' notice.
- In the event any country leaves the European Union, DHL reserves the right to change rates or zones with 30 days' notice.



# ZONES AND RATES



The International  
Specialists

Services

How to Ship  
with DHL Express

Shipping  
Tools

Zones and  
Rates

Simple  
Rules

Shipment  
Price

Optional  
Services

Surcharges

Customs  
Services

Service Capability  
and Rating Zones

Export  
Services

Import  
Services

## Import

### DHL ECONOMY SELECT IMPORT

Weight in kg	Zone 1	Zone 2	Zone 3	Zone 4	Weight in kg	Zone 1	Zone 2	Zone 3	Zone 4
1	281	301	322	335	26	586	619	691	714
2	349	371	397	415	27	593	623	697	721
3	389	414	443	464	28	600	627	703	728
4	429	457	489	513	29	607	631	709	735
5	469	500	535	562	30	614	635	715	742
6	482	513	549	578	31	622	644	729	756
7	495	526	563	594	32	630	653	743	770
8	508	539	577	610	33	638	662	757	784
9	521	552	591	626	34	646	671	771	798
10	534	565	605	642	35	654	680	785	812
11	535	568	610	645	36	662	689	799	826
12	536	571	615	648	37	670	698	813	840
13	537	574	620	651	38	678	707	827	854
14	538	577	625	654	39	686	716	841	868
15	539	580	630	657	40	694	725	855	882
16	540	583	635	660	41	702	734	869	896
17	541	586	640	663	42	710	743	883	910
18	542	589	645	666	43	718	752	897	924
19	543	592	650	669	44	726	761	911	938
20	544	595	655	672	45	734	770	925	952
21	551	599	661	679	46	742	779	939	966
22	558	603	667	686	47	750	788	953	980
23	565	607	673	693	48	758	797	967	994
24	572	611	679	700	49	766	806	981	1,008
25	579	615	685	707	50	774	815	995	1,022

Table continues overleaf

# ZONES AND RATES



## The International Specialists

## Services

## How to Ship with DHL Express

## Shipping Tools

## Zones and Rates

## Simple Rules

### Shipment Price

### Optional Services

### Surcharges

### Customs Services

### Service Capability and Rating Zones

### Export Services

### Import Services

## Import

### DHL ECONOMY SELECT IMPORT

Weight in kg	Zone 1	Zone 2	Zone 3	Zone 4	Weight in kg	Zone 1	Zone 2	Zone 3	Zone 4
51	782	824	1,009	1,036	80	1,032	1,101	1,415	1,448
52	790	833	1,023	1,050	90	1,130	1,207	1,555	1,594
53	798	842	1,037	1,064	100	1,228	1,313	1,695	1,740
54	806	851	1,051	1,078	125	1,473	1,578	2,045	2,105
55	814	860	1,065	1,092	150	1,718	1,843	2,395	2,470
56	822	869	1,079	1,106	175	1,963	2,108	2,745	2,835
57	830	878	1,093	1,120	200	2,208	2,373	3,095	3,200
58	838	887	1,107	1,134	225	2,453	2,638	3,445	3,565
59	846	896	1,121	1,148	250	2,698	2,903	3,795	3,930
60	854	905	1,135	1,162	275	2,943	3,168	4,145	4,295
61	862	914	1,149	1,176	300	3,188	3,433	4,495	4,660
62	870	923	1,163	1,190	For each additional 5kg				
63	878	932	1,177	1,204	Above 70kg	49	53	70	73
64	886	941	1,191	1,218	Above 300kg	54	60	77	79
65	894	950	1,205	1,232					
66	902	959	1,219	1,246					
67	910	968	1,233	1,260					
68	918	977	1,247	1,274					
69	926	986	1,261	1,288					
70	934	995	1,275	1,302					

- Additional charges, such as fuel fees, cost of additional services or customs services should be added to net price. All prices are in PLN and will be increased by adding any appropriate taxes on goods and services.
- For more information on our services please check [dhl.com.pl/en/express.html](https://dhl.com.pl/en/express.html). Should you have any questions, please contact us at [dhl.com.pl/exp-en/contact\\_center/contact\\_express.html](https://dhl.com.pl/exp-en/contact_center/contact_express.html).
- DHL Express does not accept shipments exceeding 1,000kg, or containing pieces exceeding 300kg or 300cm in length, and/or not meeting DHL standards for packing. Refer to our Packing Guide on [dhl.com.pl/exp-en/express/shipping/shipping\\_advice/packaging\\_advice.html](https://dhl.com.pl/exp-en/express/shipping/shipping_advice/packaging_advice.html). These network restrictions are subject to change with 30 days' notice.
- In the event any country leaves the European Union, DHL reserves the right to change rates or zones with 30 days' notice.

# ZONES AND RATES



The International  
Specialists

Services

How to Ship  
with DHL Express

Shipping  
Tools

Zones and  
Rates

Simple  
Rules

Shipment  
Price

Optional  
Services

Surcharges

Customs  
Services

Service Capability  
and Rating Zones

Export  
Services

Import  
Services

## Import

### DHL ECONOMY SELECT IMPORT 3RD COUNTRY

Weight in kg	Zone 1	Zone 2	Zone 3	Zone 4	Weight in kg	Zone 1	Zone 2	Zone 3	Zone 4
1	336	360	385	401	26	701	735	828	843
2	417	443	476	498	27	708	741	834	849
3	466	495	533	556	28	715	747	840	855
4	515	547	590	614	29	722	753	846	861
5	564	599	647	672	30	729	759	852	867
6	579	615	664	691	31	741	771	869	885
7	594	631	681	710	32	753	783	886	903
8	609	647	698	729	33	765	795	903	921
9	624	663	715	748	34	777	807	920	939
10	639	679	732	767	35	789	819	937	957
11	641	681	738	771	36	801	831	954	975
12	643	683	744	775	37	813	843	971	993
13	645	685	750	779	38	825	855	988	1,011
14	647	687	756	783	39	837	867	1,005	1,029
15	649	689	762	787	40	849	879	1,022	1,047
16	651	691	768	791	41	861	891	1,039	1,065
17	653	693	774	795	42	873	903	1,056	1,083
18	655	695	780	799	43	885	915	1,073	1,101
19	657	697	786	803	44	897	927	1,090	1,119
20	659	699	792	807	45	909	939	1,107	1,137
21	666	705	798	813	46	921	951	1,124	1,155
22	673	711	804	819	47	933	963	1,141	1,173
23	680	717	810	825	48	945	975	1,158	1,191
24	687	723	816	831	49	957	987	1,175	1,209
25	694	729	822	837	50	969	999	1,192	1,227

Table continues overleaf

# ZONES AND RATES



The International Specialists	Services	How to Ship with DHL Express	Shipping Tools	Zones and Rates	Simple Rules	
Shipment Price	Optional Services	Surcharges	Customs Services	Service Capability and Rating Zones	Export Services	Import Services

## Import

### DHL ECONOMY SELECT IMPORT 3RD COUNTRY

Weight in kg	Zone 1	Zone 2	Zone 3	Zone 4	Weight in kg	Zone 1	Zone 2	Zone 3	Zone 4
51	981	1,011	1,209	1,245	80	1,325	1,367	1,694	1,763
52	993	1,023	1,226	1,263	90	1,441	1,495	1,856	1,939
53	1,005	1,035	1,243	1,281	100	1,557	1,623	2,018	2,115
54	1,017	1,047	1,260	1,299	125	1,847	1,943	2,423	2,555
55	1,029	1,059	1,277	1,317	150	2,137	2,263	2,828	2,995
56	1,041	1,071	1,294	1,335	175	2,427	2,583	3,233	3,435
57	1,053	1,083	1,311	1,353	200	2,717	2,903	3,638	3,875
58	1,065	1,095	1,328	1,371	225	3,007	3,223	4,043	4,315
59	1,077	1,107	1,345	1,389	250	3,297	3,543	4,448	4,755
60	1,089	1,119	1,362	1,407	275	3,587	3,863	4,853	5,195
61	1,101	1,131	1,379	1,425	300	3,877	4,183	5,258	5,635
62	1,113	1,143	1,396	1,443	For each additional 5kg				
63	1,125	1,155	1,413	1,461	Above 70kg	58	64	81	88
64	1,137	1,167	1,430	1,479	Above 300kg	68	72	95	95
65	1,149	1,179	1,447	1,497					
66	1,161	1,191	1,464	1,515					
67	1,173	1,203	1,481	1,533					
68	1,185	1,215	1,498	1,551					
69	1,197	1,227	1,515	1,569					
70	1,209	1,239	1,532	1,587					

- Additional charges, such as fuel fees, cost of additional services or customs services should be added to net price. All prices are in PLN and will be increased by adding any appropriate taxes on goods and services.
- For more information on our services please check [dhl.com.pl/en/express.html](https://dhl.com.pl/en/express.html). Should you have any questions, please contact us at [dhl.com.pl/exp-en/contact\\_center/contact\\_express.html](https://dhl.com.pl/exp-en/contact_center/contact_express.html).
- DHL Express does not accept shipments exceeding 1,000kg, or containing pieces exceeding 300kg or 300cm in length, and/or not meeting DHL standards for packing. Refer to our Packing Guide on [dhl.com.pl/exp-en/express/shipping/shipping\\_advice/packaging\\_advice.html](https://dhl.com.pl/exp-en/express/shipping/shipping_advice/packaging_advice.html). These network restrictions are subject to change with 30 days' notice.
- In the event any country leaves the European Union, DHL reserves the right to change rates or zones with 30 days' notice.

# SIMPLE RULES



The International  
Specialists

Services

How to Ship  
with DHL Express

Shipping  
Tools

Zones and  
Rates

Simple  
Rules

## PROHIBITED AND RESTRICTED COMMODITIES

A variety of laws and regulations, as well as security measures, prevents DHL Express from accepting certain commodities for transport.

### Prohibited goods

- Live animals (Including mammals, reptiles, fish, invertebrates, amphibians insects and birds)
- Human remains or ashes in any form
- Bullion (of any precious metal), loose precious and semi-precious stones, amber
- Cash (current legal tender) (bank notes, currency notes and coins)
- Hunting (animal) trophies, animal parts such as ivory and shark's fin, animal remains, or animal-by-products and derived products not intended for human consumption, prohibited for movement by the CITES Convention and/or local law.
- Complete firearms and important parts of firearms, ammunition, explosives/explosive devices including inert explosives and test pieces, air guns, replica and imitation firearms
- Illegal goods, such as narcotics, pornography
- Counterfeit goods in breach of IPR
- Medicinal cannabis (in tablet or liquid form)
- Goods illegal in the destination country

### Restricted goods

- Toy guns and replica ammunition
- Tasers and firearm parts
- Antiques and works of art
- Banderols/tax stickers
- Cigarettes, cigars, tobacco products, and electronic cigarettes
- Dangerous and perishable goods
- "Cash-like" negotiable instruments in bearer form
- Jewelry and watches
- Electronics (including phones, tablets, laptops, GPS, power tools)
- Commemorative coins and medals

Restricted goods may be accepted following prior formal consent by DHL Express. Detailed information concerning prohibited and restricted goods is available at DHL Express Customer Service – International Shipments or DHL Express Sales Representative. Any shipment may be inspected if a DHL Express Courier or DHL Express Customer Service staff have doubts about its content.

DHL Express does not accept to carry goods Act of 9 March 2017 on the road monitoring system carriage of goods, and in particular: motor fuels and their derivatives, fuel, oils and lubricants, which can be used as additives for motor fuels, products containing ethyl alcohol (alcohol-based defoamers) ethyl alcohol, diluents and solvents), ethyl alcohol totally contaminated in quantities exceeding 500 kg or 500 liters and tobacco drum irrespective of the quantity. List of goods covered by the monitoring system on [puesc.gov.pl](http://puesc.gov.pl) website.

## GETTING IN TOUCH WITH DHL

### Complaints

We do our best to deliver all of our customers' shipments safely and on time. In case of any complaints or remarks on the quality of our services, please contact us at [dhl.com.pl/exp-en/express/resource\\_center.html](http://dhl.com.pl/exp-en/express/resource_center.html).

### Contact DHL Express

We are world's most international express service company and we are passionate about serving our customers. Visit [dhl.com.pl/exp-en/contact\\_center/contact\\_express.html](http://dhl.com.pl/exp-en/contact_center/contact_express.html) and learn more about us.

## SERVICE POINT DETAILS

### DHL Express Białystok

Lyski 17  
16-070  
Choroszcz

### DHL Express Gdańsk

ul. Słowackiego 202b  
80-298  
Gdańsk

### DHL Express Katowice

ul. Wolności 90  
42-625  
Ożarówice

### DHL Express Konin\*

ul. Wojska polskiego 37  
62-500  
Konin  
\*Pickup only

### DHL Express Koszalin

ul. Koszalińska 1  
76-039  
Stare Bielice

### DHL Express Kraków

ul. Emila Fieldorfa Nila 14  
32-050  
Skawina

### DHL Express Łódź

ul. Olechowska 67a  
92-403  
Łódź

### DHL Express Lublin

ul. Chemiczna 19  
20-328  
Lublin

### DHL Express Olsztyn

ul. Piłsudskiego 76  
10-499  
Olsztyn

### DHL Express Poznań

ul. Pasjonatów 65  
62-070  
Zakrzewo

### DHL Express Radom

Samorządowa 14  
26-601  
Radom

### DHL Express Rzeszów

Zaczernie 915  
32-062  
Zaczernie

### DHL Express Szczecin

ul. Brzozowa 10  
72-005  
Przeclaw

### DHL Express Toruń

ul. Kręta 25  
87-100  
Toruń

### DHL Express Warsaw

ul. Wirażowa 37  
02-158  
Warsaw

### DHL Express Wrocław

ul. Relaksowa 38  
55-080  
Nowa Wieś Wrocławska

### DHL Express Zielona Góra

ul. Lotników 12 C  
65-138  
Zielona Góra

Connect  
with us

### DHL Express (Poland)

ul. Wirażowa 37  
02-158 Warsaw



Ready to ship?

Get a quote from [mydhl.express.dhl/index/en.html](https://mydhl.express.dhl/index/en.html)



Call Customer Services on +48 42 6 345 100



Find your nearest [DHL Service Point](https://locator.dhl.com/):

<https://locator.dhl.com/>

Valid: 1st January 2021

The information in this guide is correct as of  
1st January 2021.

DHL reserves the right to amend or modify any of the information at  
any time.